

WAAS CH <b>82533</b> <b>W21A</b>	APP CRS <b>219°</b>	Rwy Idg TDZE Apt Elev	<b>4000</b> <b>963</b> <b>963</b>
--	------------------------	-----------------------------	---

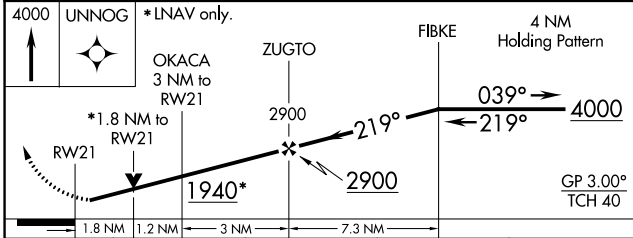
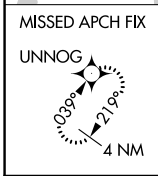
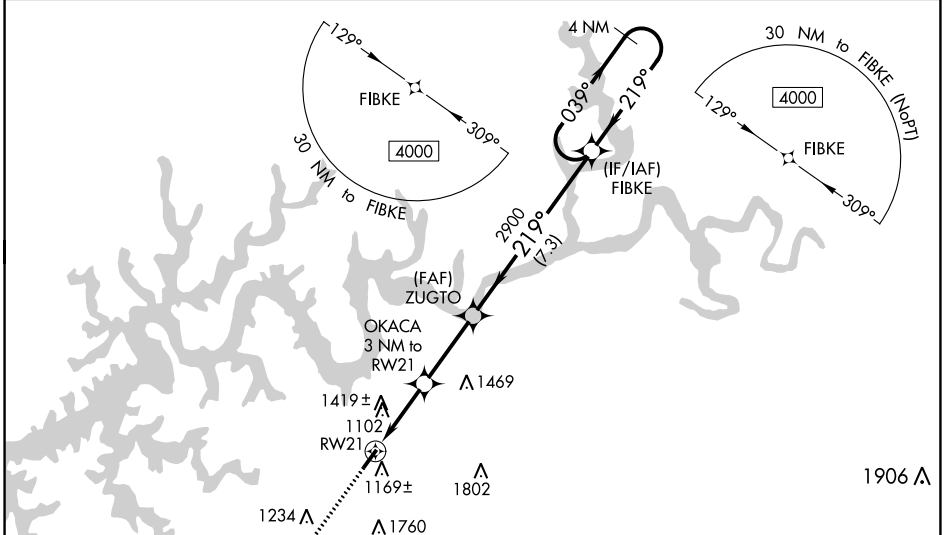
# RNAV (GPS) RWY 21

WAYNE COUNTY (EKQ)

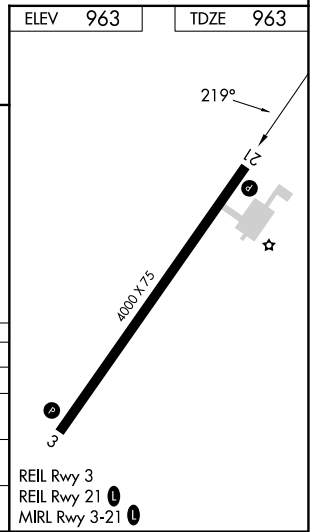
**⚠** Baro-VNAV NA when using Somerset altimeter setting. For uncompensated Baro-VNAV systems, LNAV/VNAV NA below -16°C (4°F) or above 54°C (130°F). DME/DME RNP-0.3 NA. VDP NA with Somerset altimeter setting. Helicopter visibility reduction below ¾ SM NA. When local altimeter setting not received, use Somerset altimeter setting and increase all DA 44 feet, and all MDA 60 feet; increase LPV all Cats visibility ½ mile and LNAV/VNAV all Cats visibility ½ mile. Night landing: Rwy 3 NA.

**MISSED APPROACH:** Climb to 4000 direct UNNOG and hold.

AWOS-3PT <b>118.825</b>	INDIANAPOLIS CENTER <b>124.625 371.925</b>	UNICOM <b>122.8 (CTAF)</b> <b>📻</b>
----------------------------	---	--



CATEGORY	A	B	C	D
LPV DA	1257-1	294 (300-1)		NA
LNAV/VNAV DA	1666-2½	703 (800-2½)		NA
LNAV MDA	1580-1	617 (700-1)		NA
<b>C</b> CIRCLING	1780-1¼ 817 (900-1¼)	1840-1¼ 877 (900-1¼)		NA



SE-1, 28 NOV 2024 to 26 DEC 2024

SE-1, 28 NOV 2024 to 26 DEC 2024