

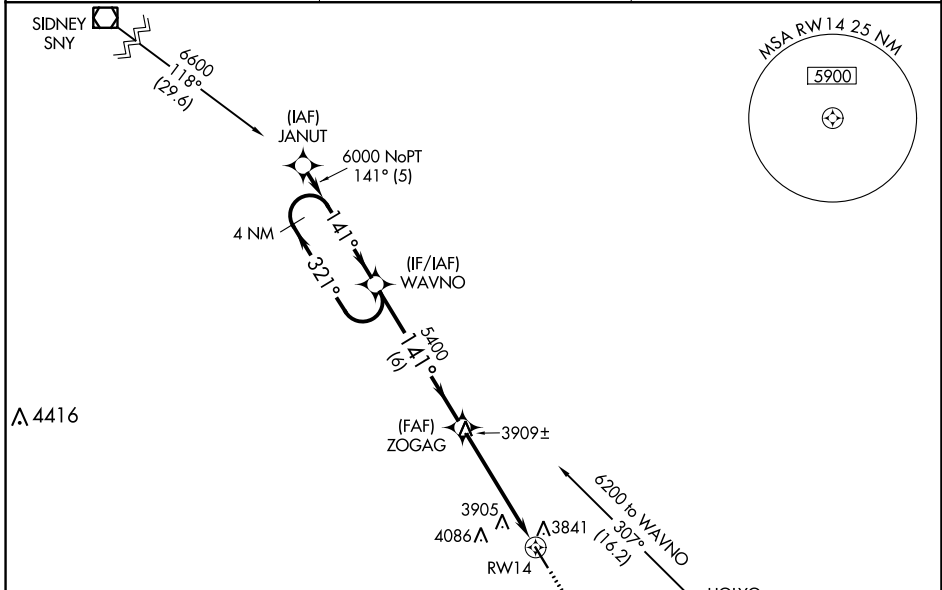
APP CRS	Rwy Idg	5000
141°	TDZE	3730
	Apt Elev	3730

RNAV (GPS) RWY 14

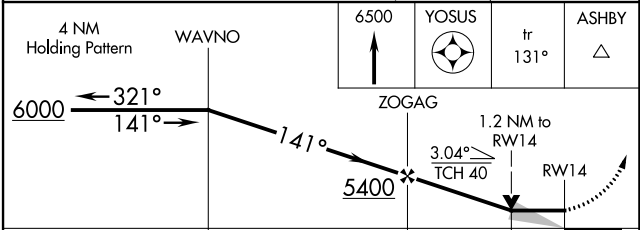
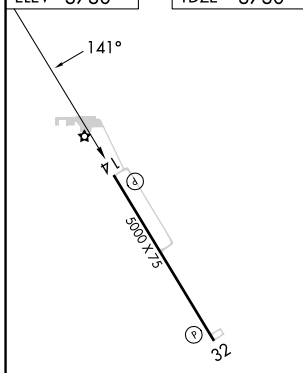
HOLYOKE (HEQ)

RNP APCH - GPS.	MISSED APPROACH: Climb to 6500 direct YOSUS and via 131° track to ASHBY and hold.
<p>▼ When local altimeter setting not received, use Sidney Muni/Lloyd W Carr Fld altimeter setting: increase all MDAs 200 feet and increase visibility LNAV Cats C and D ½ SM and Circling Cats C and D ¾ SM. VDP NA when using Sidney Muni/Lloyd W Carr Fld altimeter setting.</p>	

AWOS-3 119.275	DENVER CENTER 118.475 225.4	UNICOM 122.7 (CTAF) 0
--------------------------	---------------------------------------	---------------------------------



ELEV 3730	TDZE 3730
-----------	-----------



CATEGORY	A	B	C	D
LNAV MDA	4160-1	430 (500-1)	4160-1 ¼	430 (500-1 ¼)
CIRCLING	4200-1 470 (500-1)	4240-1 510 (600-1)	4400-1 ¾ 670 (700-1 ¾)	4400-2 670 (700-2)

MIRL Rwy 14-32 0
REIL Rwy 14 and 32 0

HOLYOKE, COLORADO
Orig-H 03NOV22

40°34'N-102°16'W

RNAV (GPS) RWY 14

SW-1, 28 NOV 2024 to 26 DEC 2024

SW-1, 28 NOV 2024 to 26 DEC 2024