




WAAS CH <b>49202</b> <b>W36A</b>	APP CRS <b>359°</b>	Rwy ldg TDZE Apt Elev	<b>7002</b> <b>589</b> <b>589</b>
--	------------------------	-----------------------------	---

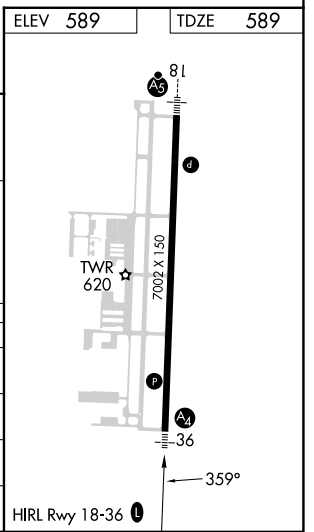
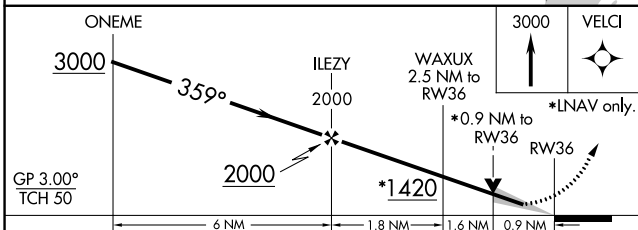
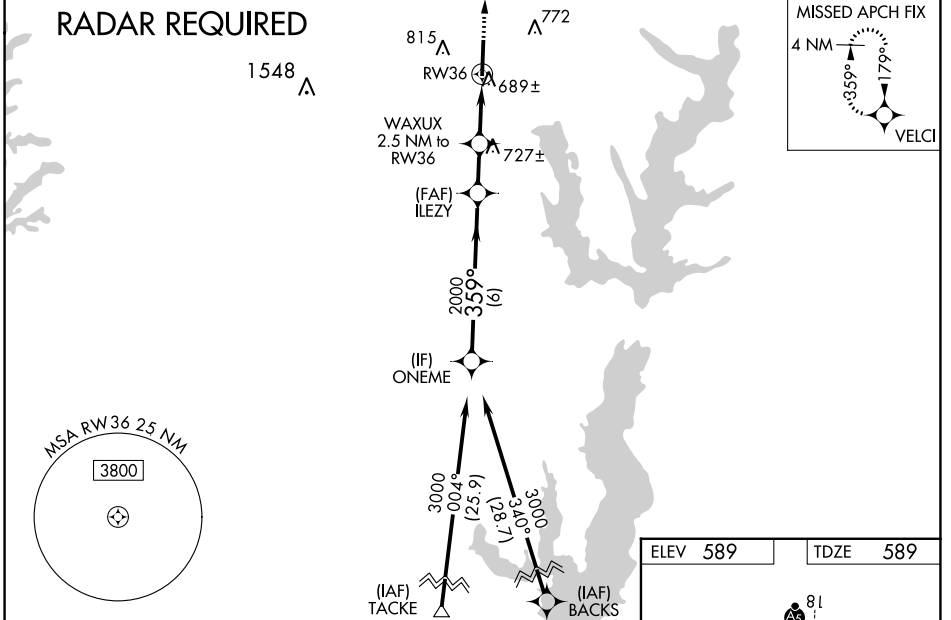
# RNAV (GPS) RWY 36

MCKINNEY NTL (TKI)

**⚠** For uncompensated Baro-VNAV systems, LNAV/VNAV NA below -8°C (18°F) or above 54°C (130°F). When local altimeter setting not received, use Dallas Love Fld altimeter setting and increase all DA 70 feet and all MDA 80 feet, and increase LNAV/VNAV all Cats visibility 1/8 mile, LNAV Cat C/D and Circling Cat C/D visibility 1/4 mile. DME/DME RNP-0.3 NA. VDP and Baro-VNAV NA when using Dallas Love Fld altimeter setting. For inop MALS increase LNAV/VNAV all Cats visibility to 3/8 mile and LNAV Cat D visibility to 1 mile. For inop MALS when using Dallas Love Fld altimeter setting increase LPV all Cats visibility to 3/8 mile, LNAV/VNAV Cat D visibility to 1 1/8 mile, and LNAV Cat D visibility to 1 1/4 mile. Inop table does not apply to LPV all Cats.

**MALS**  
 =   
**MISSED APPROACH:**  
 Climb to 3000 direct VELCI and hold.

ATIS <b>119.925</b>	LONE STAR APP CON <b>124.3 282.275</b>	<b>MCKINNEY TOWER ★</b> <b>118.825</b> (CTAF) 	GND CON <b>121.875</b>	CLNC DEL <b>121.35</b> (When twr closed)	UNICOM <b>122.95</b>
------------------------	---	--	---------------------------	--	-------------------------



CATEGORY	A	B	C	D
LPV DA		789-3/4	200 (200-3/4)	
LNAV/VNAV DA		850-3/4	261 (300-3/4)	
LNAV MDA		940-3/4	351 (400-3/4)	
<b>C</b> CIRCLING	1120-1	531 (600-1)	1200-1 1/4 611 (700-1 1/4)	1380-2 1/2 791 (800-2 1/2)

SC-2, 28 NOV 2024 to 26 DEC 2024

SC-2, 28 NOV 2024 to 26 DEC 2024