

VORTAC BYP 114.6 Chan 93	APP CRS 214°	Rwy ldg TDZE Apt Elev N/A 589
--	------------------------	--

VOR/DME-A

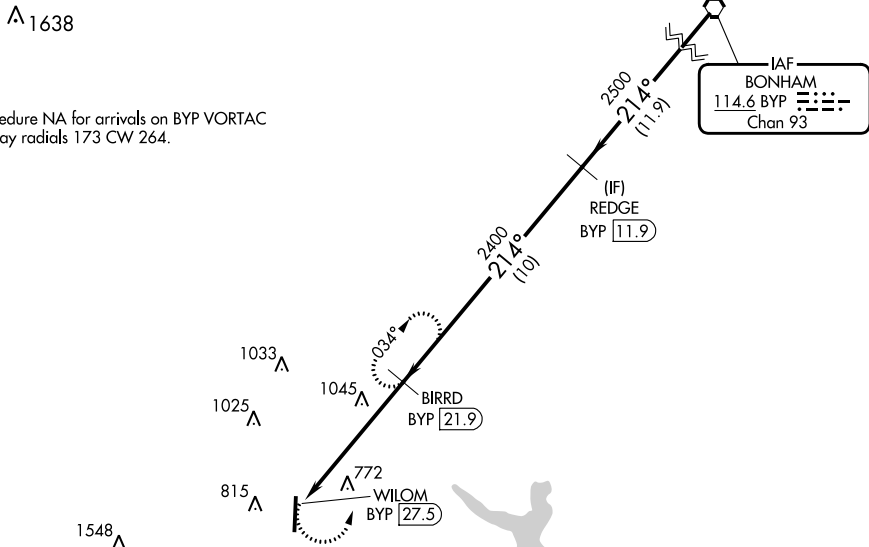
MCKINNEY NTL (TKI)

When local altimeter setting not received use Dallas Love Fld altimeter setting and increase all MDA 80 feet and Cats C and D visibility 1/4 mile.

MISSED APPROACH: Climbing left turn to 2400 on BYP VORTAC R-214 to BIRRD/BYP 21.9 DME and hold.

ATIS 119.925	LONE STAR APP CON 124.3 282.275	MCKINNEY TOWER ★ 118.825 (CTAF) 0	GND CON 121.875	CLNC DEL 121.35 (When twr closed)	UNICOM 122.95
------------------------	---	--	---------------------------	--	-------------------------

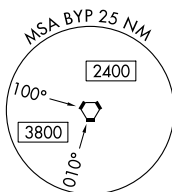
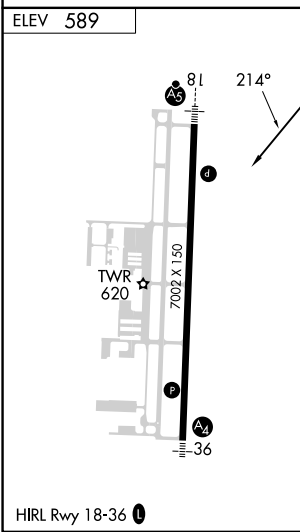
Procedure NA for arrivals on BYP VORTAC airway radials 173 CW 264.



IAF
BONHAM
114.6 BYP
Chan 93

SC-2, 28 NOV 2024 to 26 DEC 2024

SC-2, 28 NOV 2024 to 26 DEC 2024



	2400 BYP R-214	BIRRD BYP 21.9	REDGE BYP 11.9	BYP VORTAC
	WILOM BYP 27.5	BIRRD BYP 21.9	2400	214° 2500
	5.6 NM	10 NM	11.9 NM	
CATEGORY	A	B	C	D
CIRCLING	1360-1 771 (800-1)	1360-1 1/4 771 (800-1 1/4)	1360-2 1/4 771 (800-2 1/4)	1380-2 1/2 791 (800-2 1/2)