

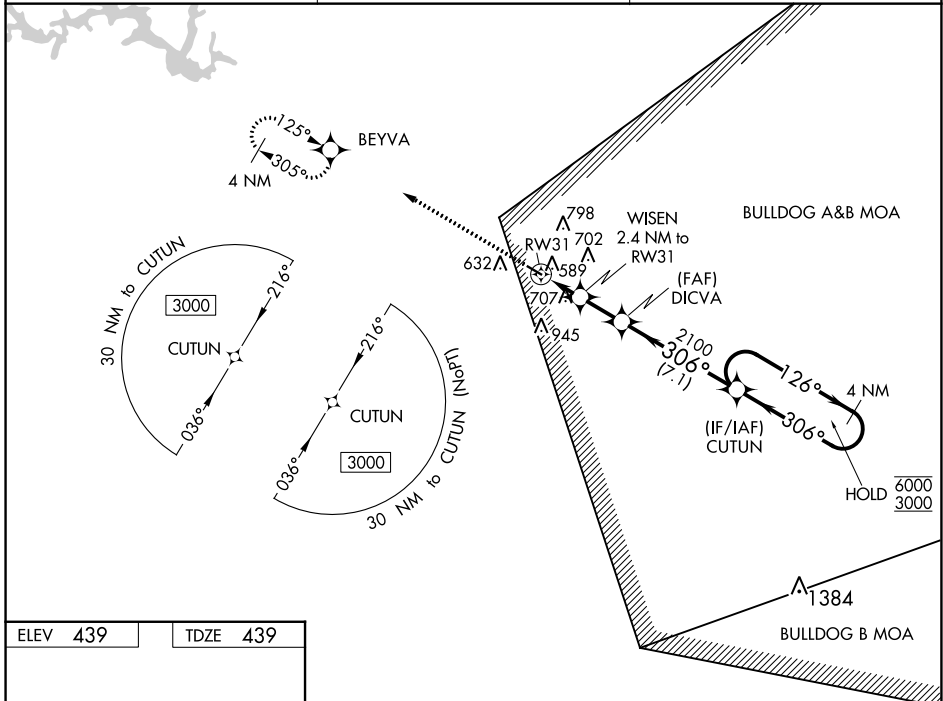
WAAS CH 72721 W31A	APP CRS 306°	Rwy Idg TDZE 439 Apt Elev 439	5015
--	------------------------	---	-------------

RNAV (GPS) RWY 31

KAOLIN FLD (OKZ)

RNP APCH.	MISSED APPROACH: Climb to 2900 direct BEYVA and hold.
<p>▼ Rwy 31 helicopter visibility reduction below 3/4 SM NA.</p> <p>▲ For uncompensated Baro-VNAV systems, LNAV/VNAV NA below -15°C or above 54°C.</p>	

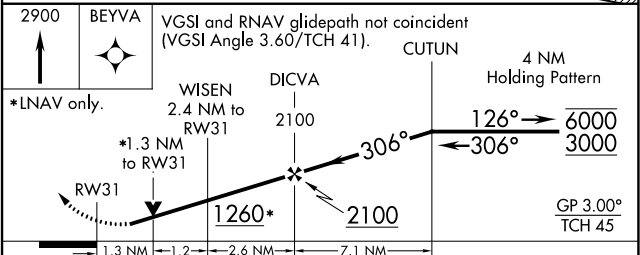
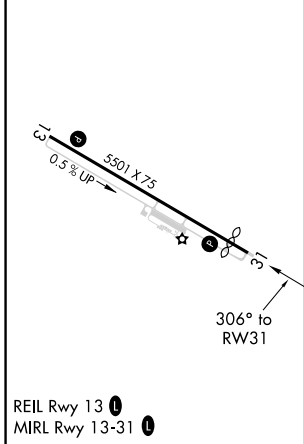
AWOS-3 120.575	ATLANTA APP CON ★ 124.2 279.6	UNICOM 123.0 (CTAF) 0
--------------------------	---	---------------------------------



SE-4, 28 NOV 2024 to 26 DEC 2024

SE-4, 28 NOV 2024 to 26 DEC 2024

ELEV 439	TDZE 439
-----------------	-----------------



CATEGORY	A	B	C	D
LPV DA	738-7/8	299 (300-7/8)		NA
LNAV/VNAV DA	848-1 1/8	409 (500-1 1/8)		NA
LNAV MDA	960-1	521 (600-1)	960-1 1/2 521 (600-1 1/2)	NA
C CIRCLING	1000-1 561 (600-1)	1120-1 681 (700-1)	1240-2 1/4 801 (900-2 1/4)	NA