

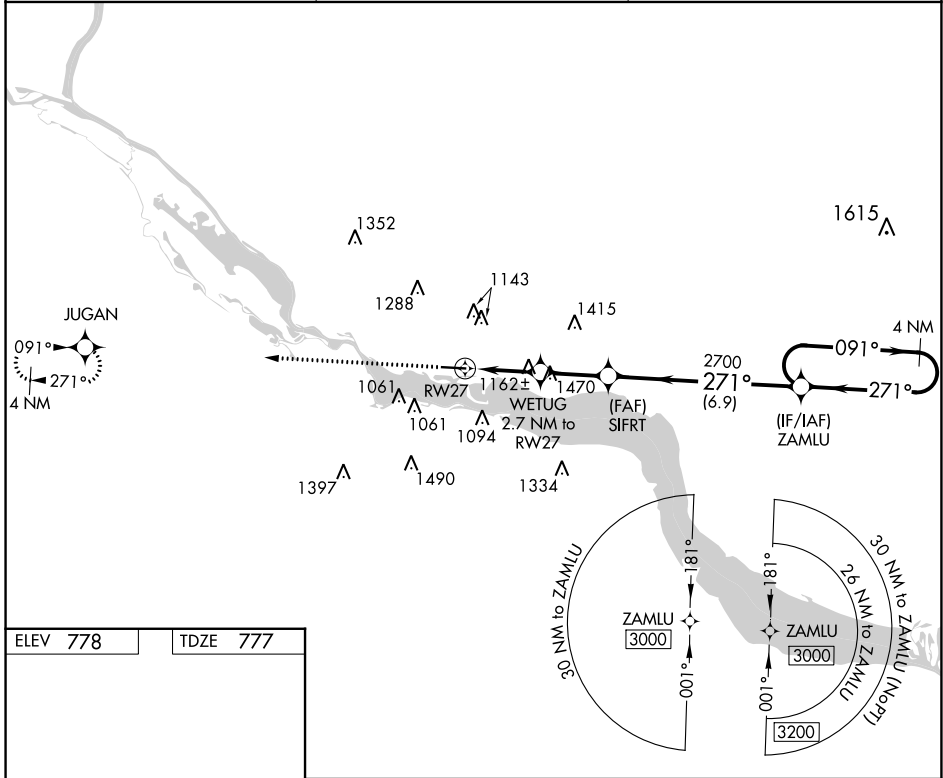
APP CRS	Rwy Idg	5010
271°	TDZE	777
	Apt Elev	778

RNAV (GPS) RWY 27

RED WING RGNL (RGK)

<p>⚠ DME/DME RNP-0.3 NA. VDP NA with South St. Paul altimeter setting. When local altimeter setting not received, use South St. Paul altimeter setting; increase all MDA 80 feet and visibility LNAV Cat C and Circling Cat C ½ SM and Circling Cat A/B ¼ SM. Helicopter visibility reduction below ¾ SM NA. Inop table does not apply to LNAV Cat C.</p>	<p>ODALS</p> <p>MISSED APPROACH: Climb to 3000 direct JUGAN and hold.</p>
--	---

<p>AWOS-3 119.25</p>	<p>MINNEAPOLIS APP CON 121.2 335.65</p>	<p>UNICOM 123.05 (CTAF) 0</p>
---------------------------------	--	--



ELEV 778	TDZE 777
----------	----------

HIRL Rwy 9-27 0

Diagram showing runway layout with dimensions: 5010 X 100. The runway is oriented 271° to RWY 27.

Detailed approach diagram showing altitudes (3000, 2700, 1800) and distances (2.1 NM, 0.6 NM, 2.4 NM, 6.9 NM). It includes the ZAMLU 3000 holding pattern and the 4 NM Holding Pattern at 3000 feet. The diagram also shows the 3.45° TCH 45 and the 091° and 271° headings.

CATEGORY	A	B	C	D
LNAV MDA	1520-¾ 743 (800-¾)	1520-1¼ 743 (800-1¼)	1520-2 743 (800-2)	NA
CIRCLING	1520-1 742 (800-1)		1640-2½ 862 (900-2½)	NA

NC-1, 28 NOV 2024 to 26 DEC 2024

NC-1, 28 NOV 2024 to 26 DEC 2024