

WAAS CH <b>97602</b> <b>W31A</b>	APP CRS <b>315°</b>	Rwy Idg <b>5600</b> TDZE <b>73</b> Apt Elev <b>76</b>
--	------------------------	---

# RNAV (GPS) RWY 31

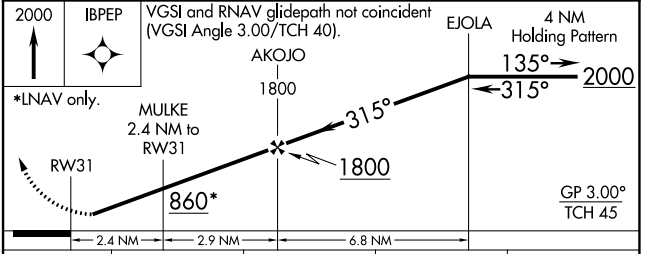
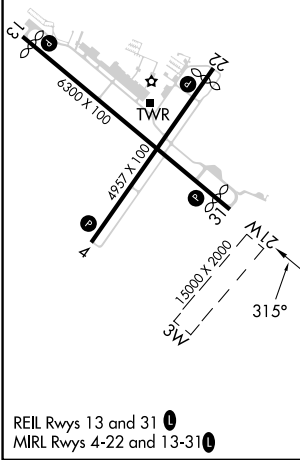
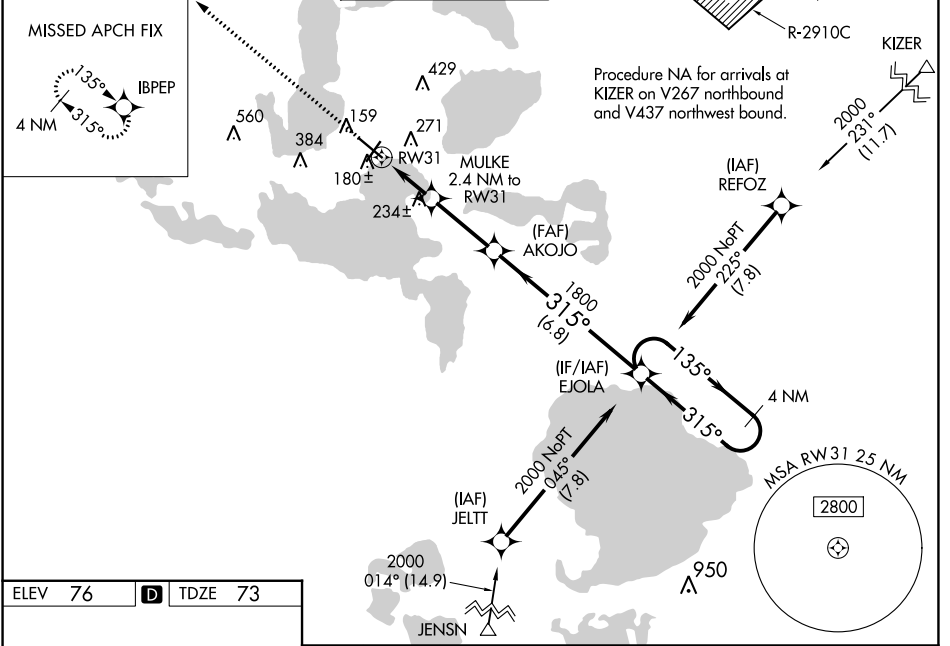
LEESBURG INTL (L.E.E)

RNP APCH-GPS.

**⚠** Baro-VNAV NA when using Orlando Intl altimeter setting. For uncompensated Baro-VNAV systems, LNAV/VNAV NA below -15°C or above 43°C. Rwy 31 helicopter visibility reduction below 1 SM NA. When local altimeter setting not received, use Orlando Intl altimeter setting: increase LPV DA to 408 feet, LNAV/VNAV DA to 442 feet, and all visibilities ¼ SM; increase all MDAs 100 feet and visibility Cats C and D ¼ SM. Straight-in Rwy 31 NA at night, Circling Rwy 4, 22, 31 NA at night.

**MISSED APPROACH:**  
Climb to 2000 direct IBPEP and hold.

ATIS <b>134.325</b>	ORLANDO APP CON <b>135.3 351.9</b>	LEESBURG TOWER ★ <b>119.35 (CTAF) 0</b>	GND CON <b>121.725</b>	CLNC DEL <b>120.225</b> (When twr closed)	UNICOM <b>122.725</b>
------------------------	---------------------------------------	--	---------------------------	---	--------------------------



CATEGORY	A	B	C	D
LPV DA	323-1 250 (300-1)			
LNAV/VNAV DA	357-1 284 (300-1)			
LNAV MDA	500-1 427 (500-1)	500-1¼ 427 (500-1¼)		
CIRCLING	700-1 624 (700-1)	780-2 704 (800-2)	780-2¼ 704 (800-2¼)	

SE-3, 28 NOV 2024 to 26 DEC 2024

SE-3, 28 NOV 2024 to 26 DEC 2024