

WAAS CH 63135 W32A	APP CRS 323°	Rwy Idg 4400 TDZE 1800 Apt Elev 1800
--	------------------------	---

RNAV (GPS) RWY 32

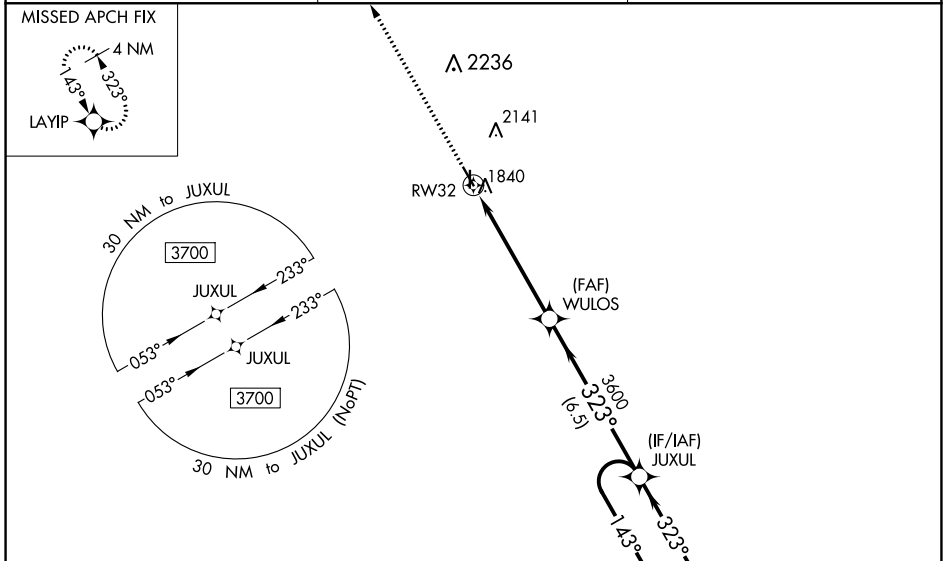
SMITH CENTER MUNI (K82)

RNP APCH-GPS.

For uncompensated Baro-VNAV systems, LNAV/VNAV NA below -18°C or above 54°C. When local altimeter setting not received, use Concordia altimeter setting and increase all DA 169 feet and all MDA 180 feet; increase LPV all Cats visibility ¼ SM, LNAV/VNAV all Cats visibility ½ SM, Circling Cat A visibility ¼ SM and Circling Cat B visibility ½ SM. Baro-VNAV and VDP NA with Concordia altimeter setting. Circling Rwy 36 NA at night.

MISSED APPROACH: Climb to 3900 direct LAYIP and hold.

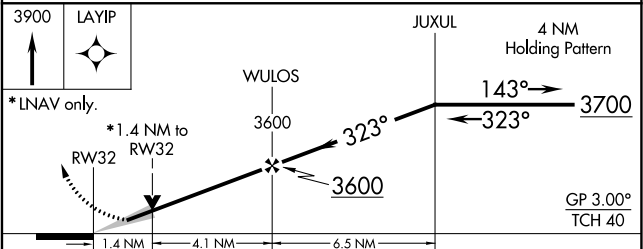
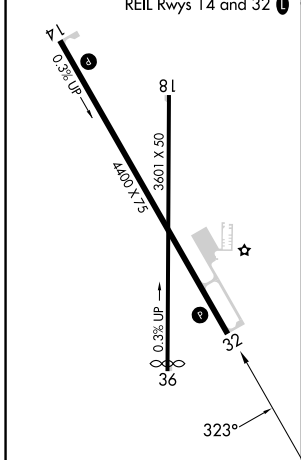
AWOS-3PT 118.45	MINNEAPOLIS CENTER 119.4 278.8	UNICOM 122.8 (CTAF)
---------------------------	--	-------------------------------



NC-2, 28 NOV 2024 to 26 DEC 2024

NC-2, 28 NOV 2024 to 26 DEC 2024

ELEV 1800	D TDZE 1800
-----------	--------------------



CATEGORY	A	B	C	D
LPV DA	2000-1	200 (200-1)		NA
LNAV/VNAV DA	2050-1	250 (300-1)		NA
LNAV MDA	2300-1	500 (500-1)		NA
C CIRCLING	2480-1 680 (700-1)	2580-1 780 (800-1)		NA