

(KER4.KER) 24081  
KERMIT FOUR DEPARTURE

AL-6707 (FAA)

STANLY COUNTY (VUJ)  
ALBEMARLE, NORTH CAROLINA

CHARLOTTE DEP CON  
128.325 307.8  
AWOS-3  
128.175  
CLNC DEL  
121.75 254.375  
GND CON  
121.75 254.375  
STANLY COUNTY TOWER \*  
126.275 291.9

RADAR and DME required.

**TOP ALTITUDE:  
3000**

PULASKI  
116.8 PSK  
Chan 115

BARRETS MOUNTAIN  
113.75 BZM  
Chan 84(Y)

SUGARLOAF MOUNTAIN  
112.2 SUG  
Chan 59

CHARLOTTE  
115.0 CLT  
Chan 97

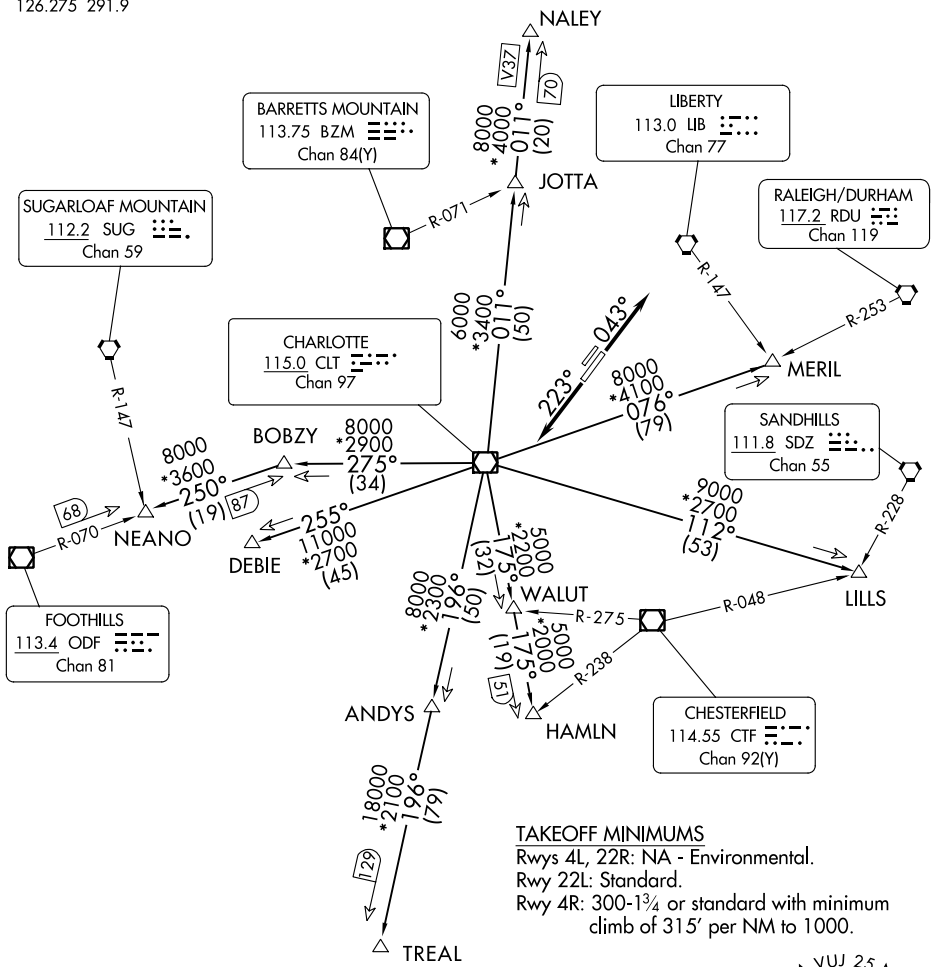
LIBERTY  
113.0 LIB  
Chan 77

RALEIGH/DURHAM  
117.2 RDU  
Chan 119

SANDHILLS  
111.8 SDZ  
Chan 55

CHESTERFIELD  
114.55 CTF  
Chan 92(Y)

FOOTHILLS  
113.4 ODF  
Chan 81



SE-2, 28 NOV 2024 to 26 DEC 2024

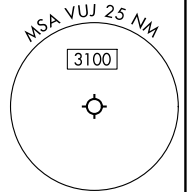
SE-2, 28 NOV 2024 to 26 DEC 2024

**TAKEOFF MINIMUMS**  
Rwys 4L, 22R: NA - Environmental.  
Rwy 22L: Standard.  
Rwy 4R: 300-1 $\frac{3}{4}$  or standard with minimum  
climb of 315' per NM to 1000.

NOTE: For turbo jet aircraft only.  
NOTE: Upon reaching 10000 MSL, accelerate to  
and maintain 280K, if unable advise ATC.  
NOTE: Transponder code will be issued via Charlotte  
clearance delivery.

NOTE: Chart not to scale.

(CONTINUED ON FOLLOWING PAGE)



KERMIT FOUR DEPARTURE  
(KER4.KER) 21MAR24

ALBEMARLE, NORTH CAROLINA  
STANLY COUNTY (VUJ)