

LOC I-JVY <b>111.7</b>	APP CRS <b>182°</b>	Rwy Idg TDZE Apt Elev	<b>7000</b> <b>478</b> <b>478</b>
---------------------------	------------------------	-----------------------------	---

# ILS or LOC RWY 18

CLARK RGNL (JVY)

ADF required. RADAR required for procedure entry.

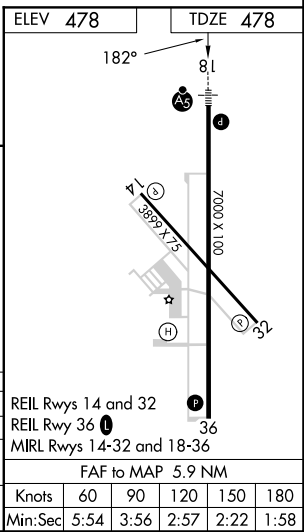
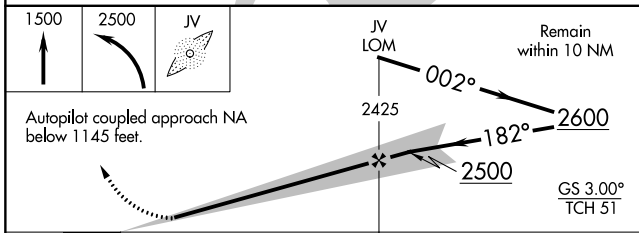
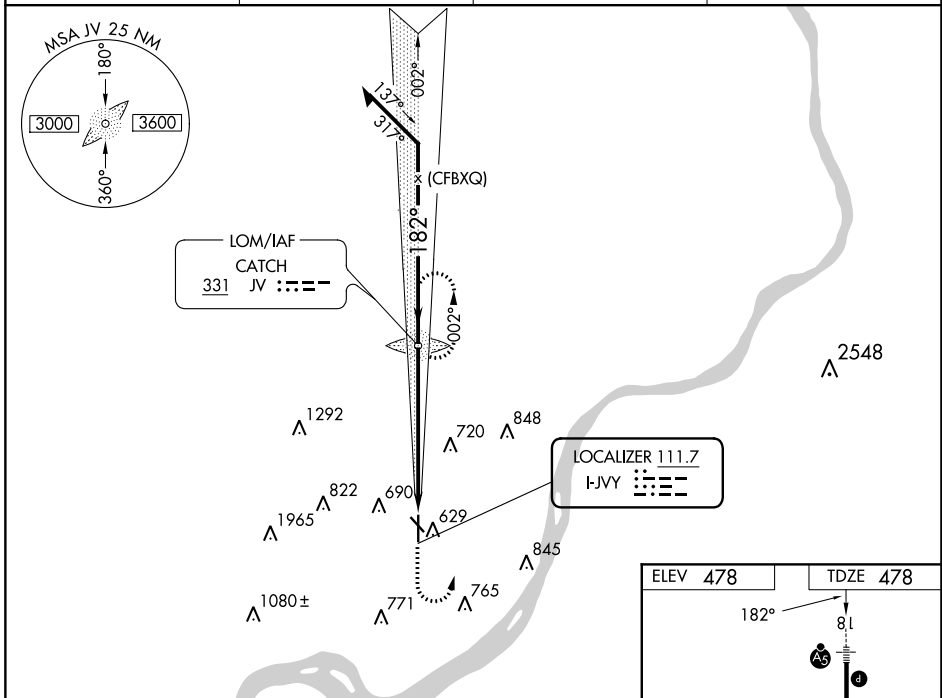
**▼** Circling NA for Cat D southwest of Rws 14 and 36. Circling Rwy 14, 32 NA at night.

**▲ NA** For inop ALS, increase S-LOC 18 Cats C and D visibility to 1 3/8 SM. When local altimeter setting not received, use Louisville Muhammad Ali Intl altimeter setting: increase DA to 708; increase all MDAs 40 feet, S-LOC 18 Cats C and D visibility 1/8 SM and Circling Cat C visibility 1/4 SM.

MALSR  
A5

MISSED APPROACH:  
Climb to 1500 then climbing left turn to 2500 direct CATCH LOM and hold.

AWOS-3 <b>118.575</b>	LOUISVILLE APP CON <b>132.075 327.0</b>	CLNC DEL <b>118.05</b>	UNICOM <b>122.7 (CTAF) 1</b>
--------------------------	--	---------------------------	---------------------------------



CATEGORY	A	B	C	D
S-ILS 18		678-1/2	200 (200-1/2)	
S-LOC 18	980-1/2	502 (600-1/2)	980-1	502 (600-1)
CIRCLING	1000-1 522 (600-1)	1040-1 562 (600-1)	1060-1 1/2 582 (600-1/2)	1100-2 622 (700-2)

EC-2, 28 NOV 2024 to 26 DEC 2024

EC-2, 28 NOV 2024 to 26 DEC 2024