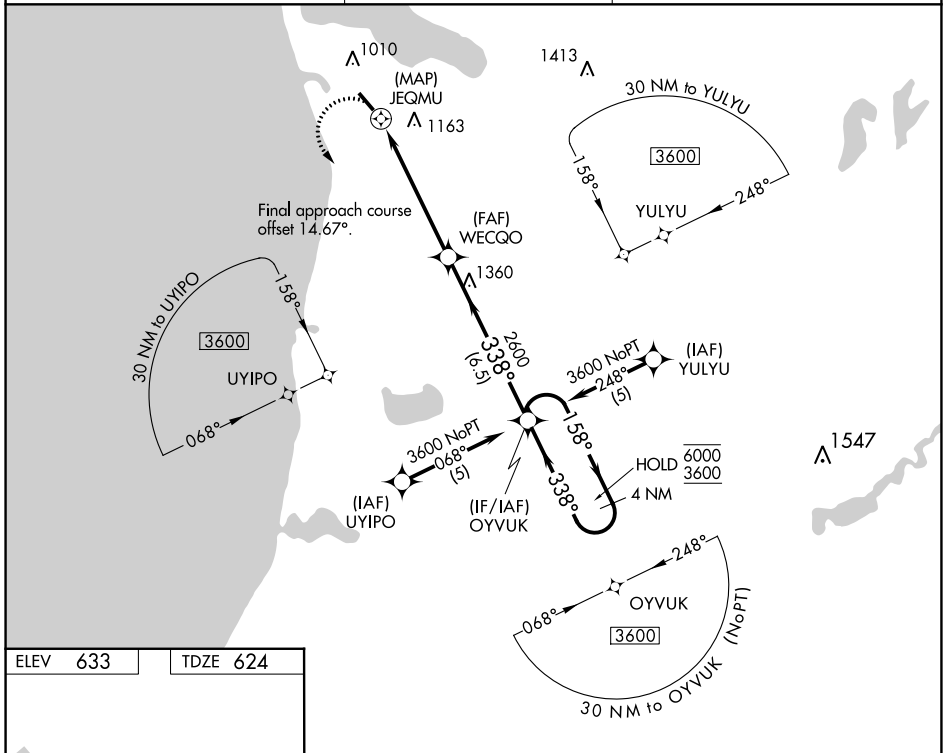


APP CRS	Rwy Idg	3939
338°	TDZE	624
	Apt Elev	633

RNAV (GPS) RWY 33

FRANKFORT DOW MEML FLD (F'KS)

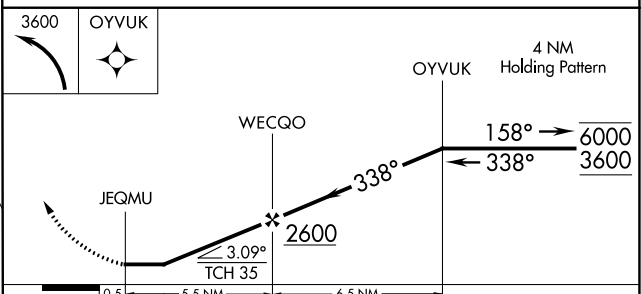
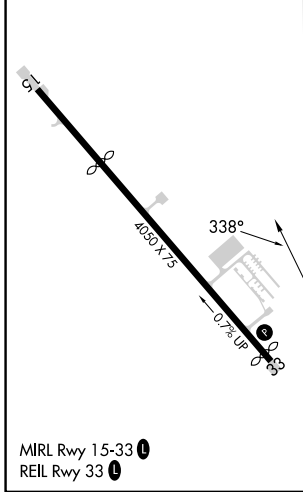
RNP APCH - GPS.		MISSED APPROACH: Climbing left turn to 3600 direct OYVUK and hold.
Procedure NA at night. Rwy 33 helicopter visibility reduction below 1 SM NA.		
AWOS-3P 118.325	MINNEAPOLIS CENTER 132.9 338.3	UNICOM 123.05 (CTAF) 0



EC-1, 28 NOV 2024 to 26 DEC 2024

EC-1, 28 NOV 2024 to 26 DEC 2024

ELEV 633	TDZE 624
----------	----------



CATEGORY	A	B	C	D
LNAV MDA	1360-1	736 (800-1)	1360-2 736 (800-2)	NA
CIRCLING	1400-1 767 (800-1)	1520-1¼ 887 (900-1¼)	1520-2¾ 887 (900-2¾)	NA