

WAAS CH 93736 W26A	APP CRS 260°	Rwy Idg TDZE 1476 Apt Elev 1476	2922
--	------------------------	---	-------------

RNAV (GPS) RWY 26

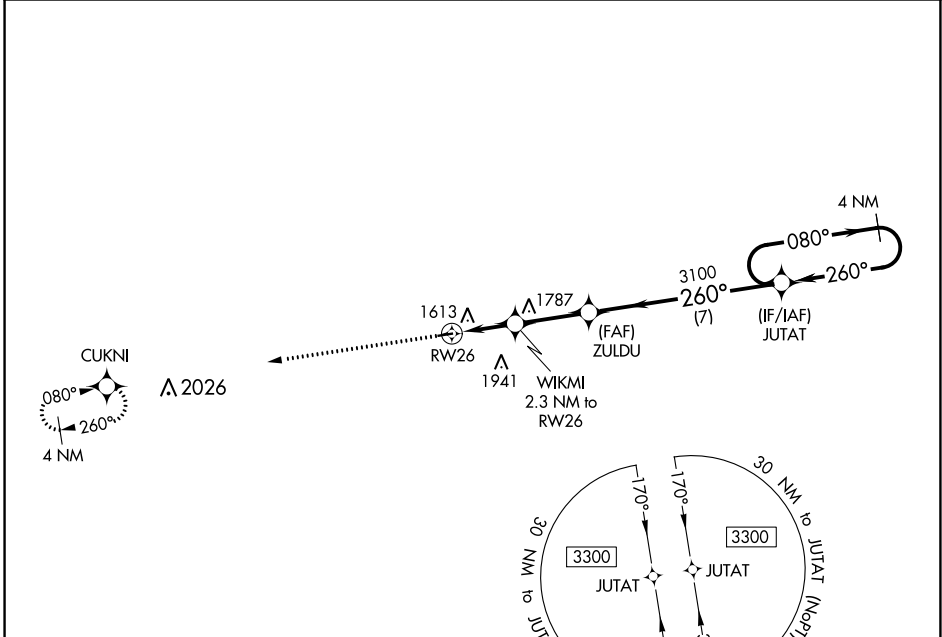
MOUNTAIN GROVE MEML (1M0)

⚠ DME/DME RNP-0.3 NA. Procedure NA at night. Use Fort Leonard Wood altimeter setting, when not received use Springfield altimeter setting and increase all MDA 20 feet. Helicopter visibility reduction below 1 SM NA.

MISSED APPROACH: Climb to 3300 direct CUKNI and hold.

KANSAS CITY CENTER
128.35 284.675

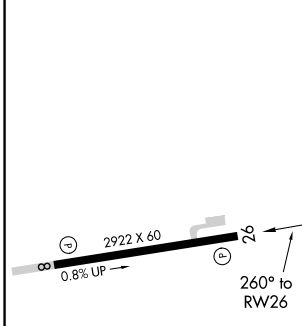
CTAF
122.9



NC-3, 28 NOV 2024 to 26 DEC 2024

NC-3, 28 NOV 2024 to 26 DEC 2024

ELEV 1476	TDZE 1476
------------------	------------------



3300	CUKNI	Visual Segment - Obstacles.			
		WIKMI 2.3 NM to RW26	ZULDU	JUTAT	4 NM Holding Pattern
		RW26	3100		080° → 3300
		2240			← 260°
		→ 2.3 NM	→ 2.7 NM	→ 7 NM	
CATEGORY		A	B	C	D
LP MDA		2120-1	644 (700-1)		NA
LNAV MDA		2160-1	684 (700-1)		NA
C CIRCLING		2160-1 684 (700-1)	2240-1 764 (800-1)		NA

MIRL Rwy 8-26 **Ⓛ**
REIL Rwy 8 and 26 **Ⓛ**