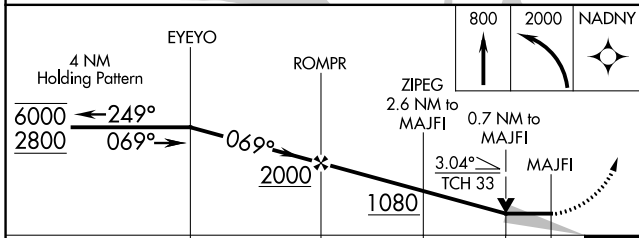
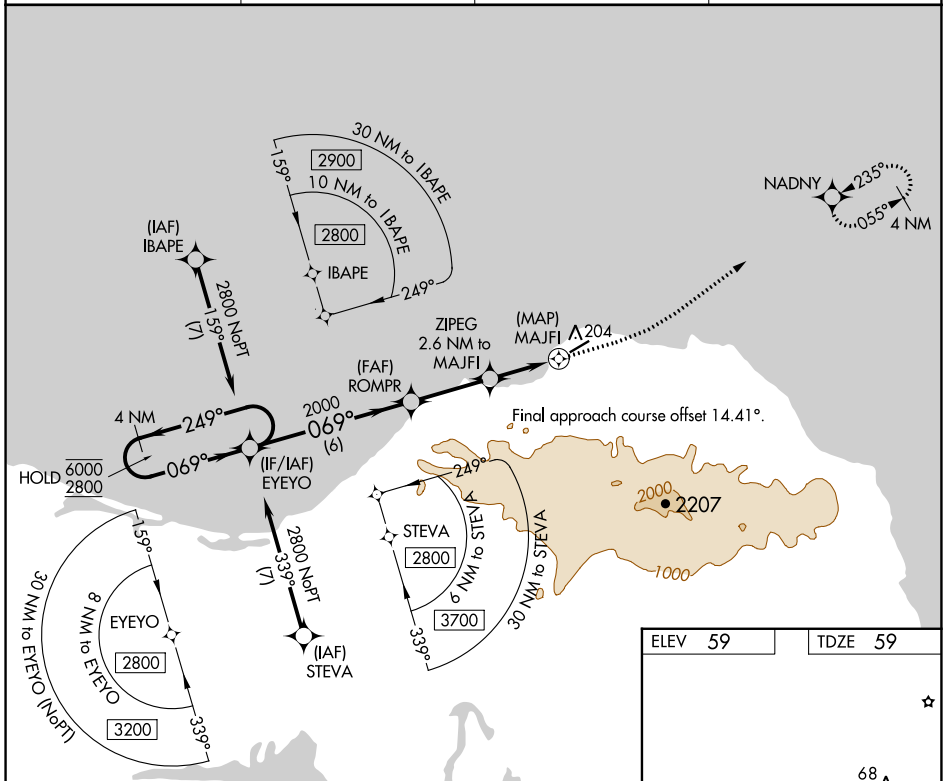


APP CRS	Rwy Idg	<b>4400</b>
<b>069°</b>	TDZE	<b>59</b>
	Apt Elev	<b>59</b>

# RNAV (GPS) Y RWY 5

SAVOONGA (SVA) (PASA)

RNP APCH - GPS.		MISSED APPROACH: Climb to 800, then climbing left turn to 2000 direct NADNY and hold.	
<p>⚠ Circling NA southeast of Rwy 5-23.</p>		AWOS-3P <b>121.3</b>	ANCHORAGE CENTER <b>132.2 281.4</b>
		NOME RADIO <b>122.3</b>	CTAF <b>122.7</b>



ELEV 59	TDZE 59
---------	---------

68°

4400 X 100

NADNY

609°

CATEGORY	A	B	C	D
LNVA MDA	460-1	401 (500-1)	460-1½	401 (500-1½)
CIRCLING	520-1	461 (500-1)	780-2 721 (800-2)	1100-3 1041 (1100-3)

AK, 31 OCT 2024 to 26 DEC 2024

AK, 31 OCT 2024 to 26 DEC 2024