

WAAS CH 45839 W32A	APP CRS 319°	Rwy Idg TDZE Apt Elev	5200 3430 3430
--	------------------------	-----------------------------	---

RNAV (GPS) RWY 32

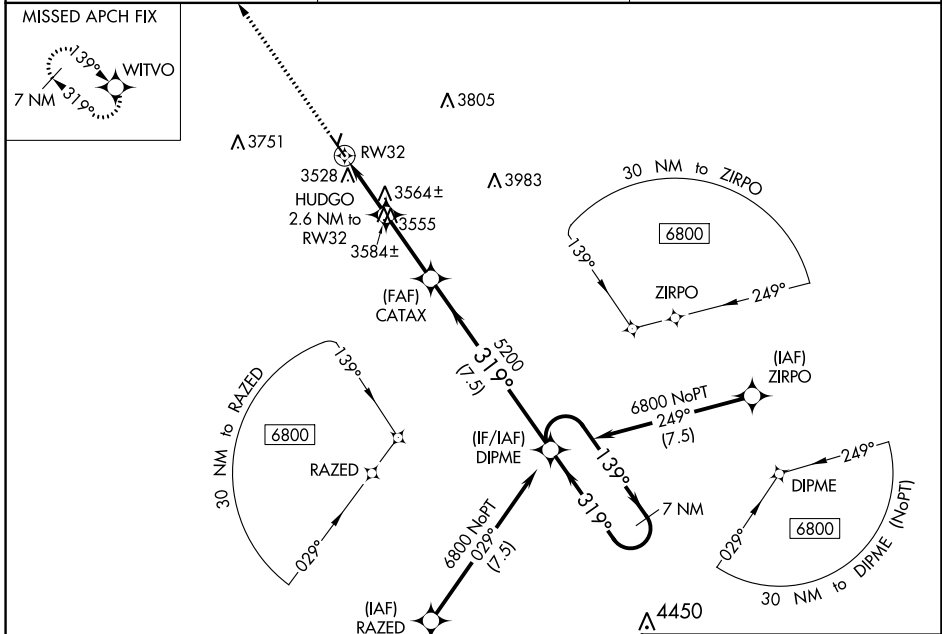
CHEYENNE COUNTY MUNI (SYF)

RNP APCH.

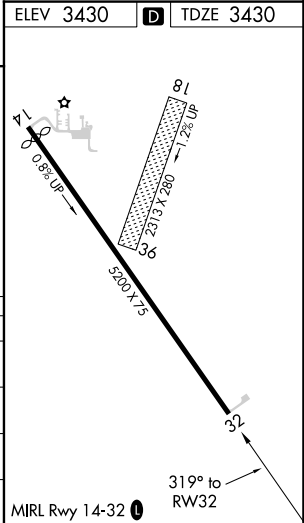
⚠ Circling NA to Rwy 18 and 36. For uncompensated Baro-VNAV systems, LNAV/VNAV NA below -21°C or above 54°C.

⚠ MISSED APPROACH: Climb to 6800 direct WITVO and hold, continue climb-in-hold to 6800.

AWOS-3 118.925	DENVER CENTER 132.7 226.675	UNICOM 122.8 (CTAF) 0
--------------------------	---------------------------------------	---------------------------------



6800 WITVO				
*LNAV only	HUDGO 2.6 NM to RW32	CATAX 5200	DIPME 7 NM Holding Pattern	6800
	*1.1 NM to RW32			GP 3.00° TCH 50
	1.1 NM	1.5 NM	2.8 NM	7.5 NM
CATEGORY	A	B	C	D
LPV DA	3680-1	250 (300-1)		NA
LNAV/VNAV DA	3680-1	250 (300-1)		NA
LNAV MDA	3820-1	390 (400-1)	3820-1 1/8 390 (400-1 1/8)	NA
C CIRCLING	3840-1 410 (500-1)	3880-1 450 (500-1)	3900-1 1/2 470 (500-1 1/2)	NA



NC-2, 28 NOV 2024 to 26 DEC 2024

NC-2, 28 NOV 2024 to 26 DEC 2024