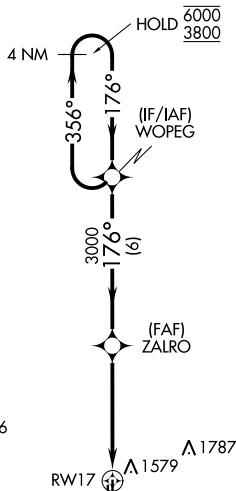
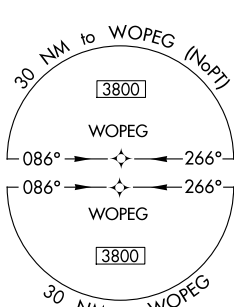


APP CRS CH 45643 W17A	APP CRS 176°	Rwy Idg 5600 TDZE 1420 Apt Elev 1420
---	------------------------	---

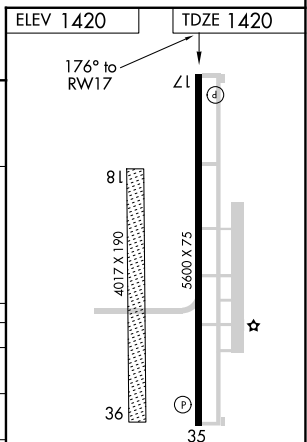
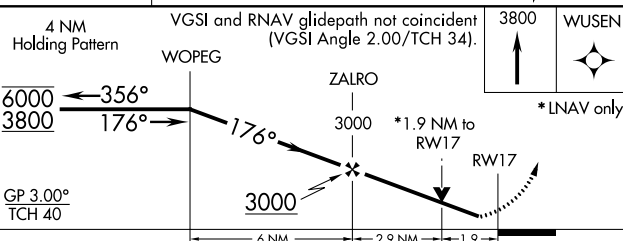
RNAV (GPS) RWY 17

EL RENO RGNL (RQO)

RNP APCH.		MISSED APPROACH: Climb to 3800 direct WUSEN and hold.
<p>▼ Circling NA to Rwy 18 and 36. Circling Rwy 35 NA at night. ▲ Rwy 17 helicopter visibility reduction below 3/4 SM NA. For uncompensated Baro-VNAV systems, LNAV/VNAV NA below -17°C or above 54°C.</p>		
AWOS-3 118.475	OKE CITY APP CON 124.6 266.8	UNICOM 122.8 (CTAF) 0



MISSED APCH FIX



CATEGORY	A	B	C	D
LPV DA	1670-3/4 250 (300-3/4)			
LNAV/VNAV DA	1754-1 334 (400-1)			
LNAV MDA	1860-1 440 (500-1)	1860-1 1/4 440 (500-1 1/4)		
C CIRCLING	1900-1 480 (500-1)	2140-2 720 (800-2)	2140-2 1/4 720 (800-2 1/4)	

MIRL Rwy 17-35 0
REIL Rwy 17 and 35 0

SC-1, 28 NOV 2024 to 26 DEC 2024

SC-1, 28 NOV 2024 to 26 DEC 2024