

VOR/DME ZZV 114.95 Chan 96(Y)	APP CRS 229°	Rwy Idg TDZE Apt Elev	3498 1047 1051
---	------------------------	-----------------------------	---

VOR/DME RWY 26

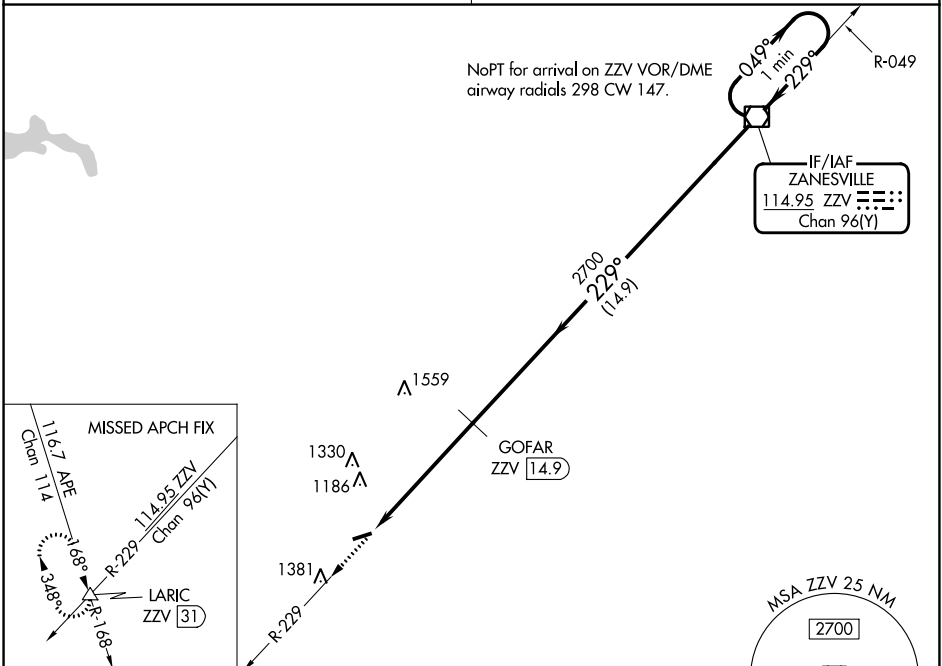
ED NEWLON FLD (I86)

Visibility reduction by helicopters NA. Use Zanesville altimeter setting; when not received, use Lancaster altimeter setting and increase all MDA 20 feet. Procedure NA at night.

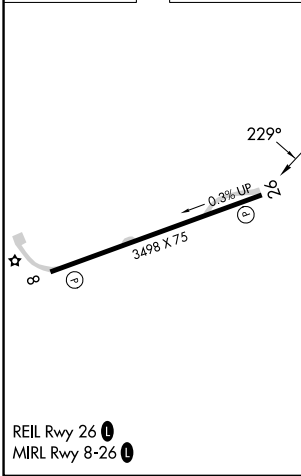
MISSED APPROACH: Climb to 3000 via ZZV VOR/DME R-229 to LARIC INT/ZZV 31 DME and hold.

INDIANAPOLIS CENTER
124.45 323.275

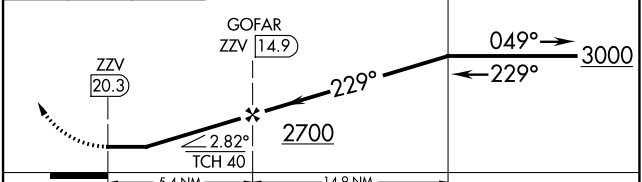
UNICOM
122.8 (CTAF) **1**



ELEV 1051 TDZE 1047



3000	ZZV R-229	LARIC Δ ZZV [31]	VGSI and descent angles not coincident (VGSI Angle 4.00/TCH 28).	ZZV VOR/DME	One Minute Holding Pattern
------	-----------	-------------------------	--	-------------	----------------------------



CATEGORY	A	B	C	D
S-26	1620-1 573 (600-1)	1620-1¼ 573 (600-1¼)	1620-1½ 573 (600-1½)	NA
CIRCLING	1620-1 569 (600-1)	1620-1¼ 569 (600-1¼)	1620-1½ 569 (600-1½)	NA

EC-2, 28 NOV 2024 to 26 DEC 2024

EC-2, 28 NOV 2024 to 26 DEC 2024