

# RNAV (GPS) RWY 20

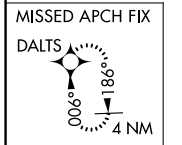
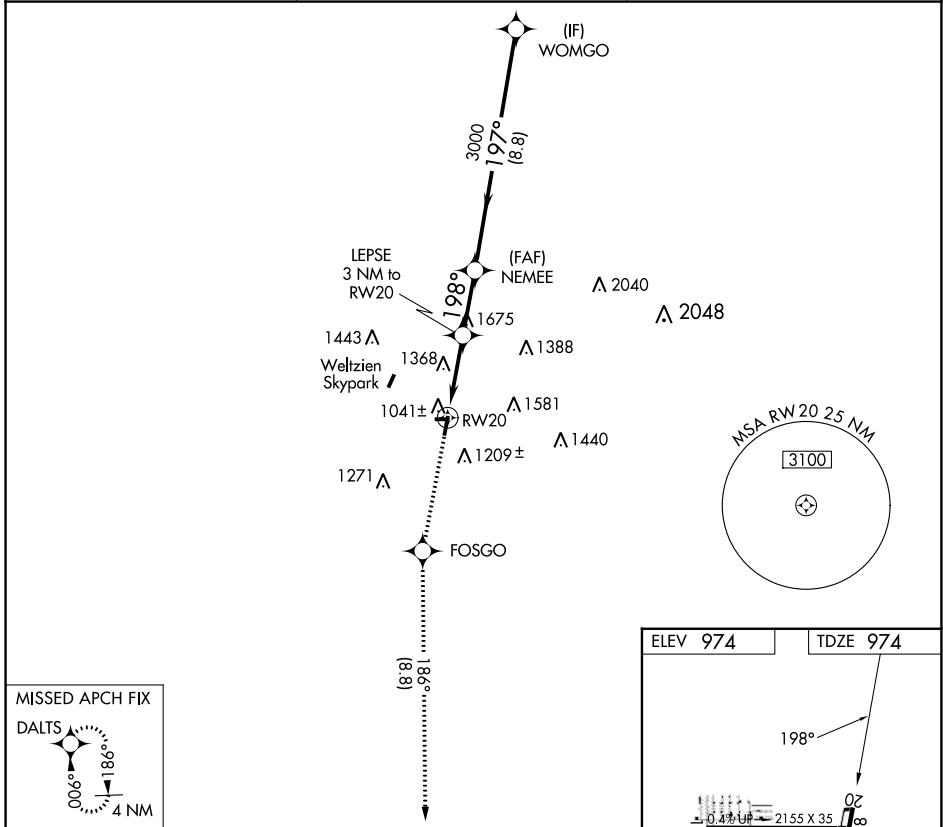
WADSWORTH MUNI (3G3)

APP CRS <b>198°</b>	Rwy Idg TDZE Apt Elev	<b>3530</b> <b>974</b> <b>974</b>
------------------------	-----------------------------	-----------------------------------------

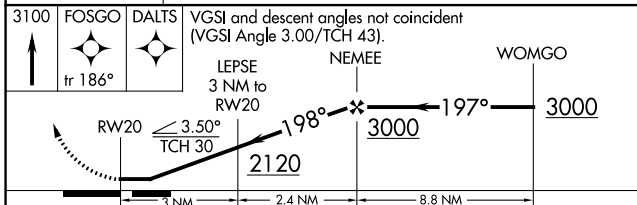
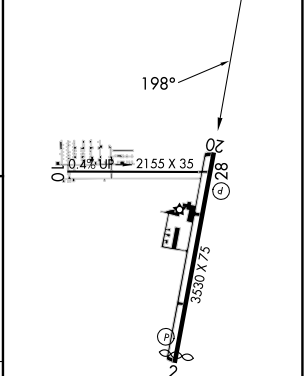
RNP APCH.  
 ▼ Rwy 20 helicopter visibility reduction below 1 SM NA. Procedure NA at night.  
 ▲ NA Circling NA west of Rwy 2-20. Use Wooster altimeter setting, when not received, use Akron-Canton Rgnl altimeter setting and increase all MDA 40 feet and LNAV visibility Cat C ½ SM.

MISSED APPROACH: Climb to 3100 direct FOSGO and on track 186° to DALTS and hold.

BJJ ASOS <b>118.075</b>	CLEVELAND APP CON ★ <b>125.5 371.875</b>	UNICOM <b>122.8 (CTAF) 0</b>
----------------------------	---------------------------------------------	---------------------------------



ELEV 974	TDZE 974
----------	----------



CATEGORY	A	B	C	D
LNAV MDA	1720-1 746 (800-1)	1720-1¼ 746 (800-1¼)	1720-2 746 (800-2)	NA
CIRCLING	1720-1 746 (800-1)	1760-1¼ 786 (800-1¼)	1980-3 1006 (1100-3)	NA

MRL Rwy 2-20 0

EC-2, 28 NOV 2024 to 26 DEC 2024

EC-2, 28 NOV 2024 to 26 DEC 2024