

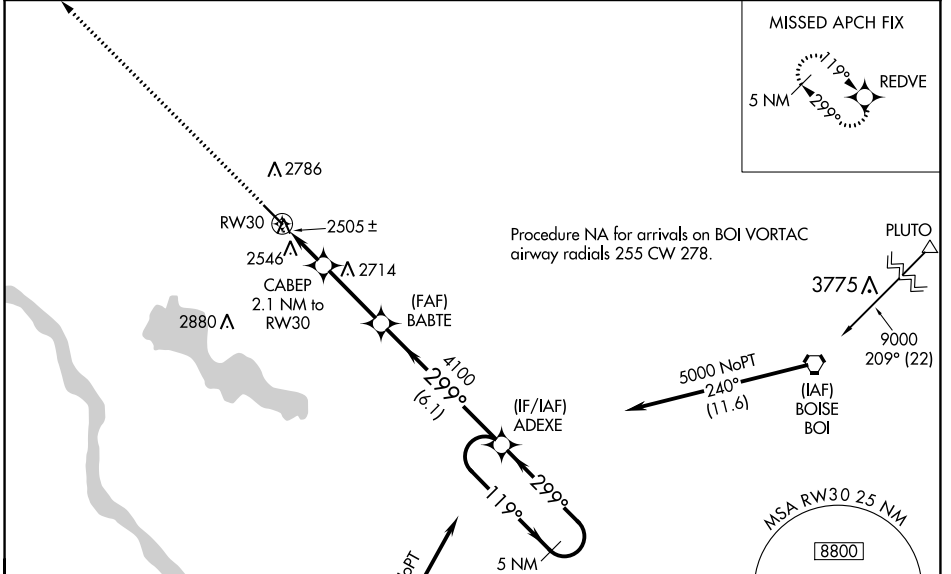
WAAS CH 73007 W30A	APP CRS 299°	Rwy ldg TDZE Apt Elev	5500 2432 2432
--	------------------------	-----------------------------	---

RNAV (GPS) RWY 30

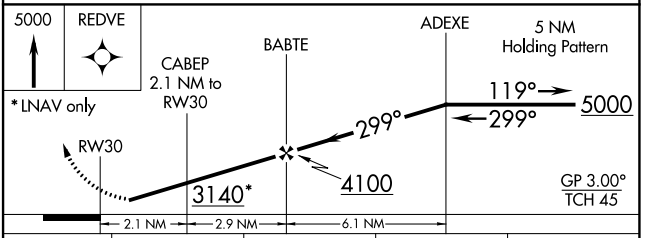
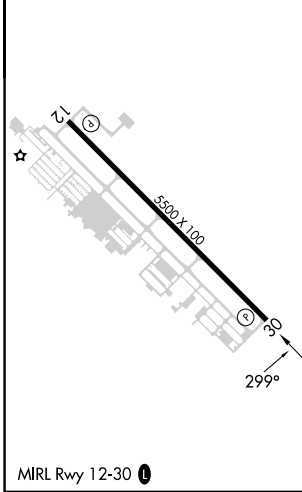
CALDWELL EXEC (EUL)

RNP APCH.	<p>⚠ Rwy 30 helicopter visibility reduction below 3/4 SM NA. Baro-VNAV NA when using Boise altimeter setting. For uncompensated Baro-VNAV systems, LNAV/VNAV NA below -19°C or above 44°C. When local altimeter setting not received, use Boise altimeter setting and increase all DA/MDA 120 feet and all visibilities 1/2 mile.</p>	<p>MISSED APPROACH: Climb to 5000 direct REDVE and hold.</p>

AWOS-3PT 135.075	BIG SKY APP CON 119.6 269.4	UNICOM 123.0 (CTAF) 📻
----------------------------	---------------------------------------	--



ELEV 2432	TDZE 2432
-----------	-----------



CATEGORY	A	B	C	D
LPV DA	2687-1 255 (300-1)			
LNAV/VNAV DA	2822-1 1/4 390 (400-1 1/4)			
LNAV MDA	2880-1	448 (500-1)	2880-1 3/8 448 (500-1 3/8)	2880-1 1/2 448 (500-1 1/2)

NW-1, 28 NOV 2024 to 26 DEC 2024

NW-1, 28 NOV 2024 to 26 DEC 2024