

WAAS CH 78202 W11A	APP CRS 110°	Rwy Idg TDZE Apt Elev	5000 2537 2537
--	------------------------	-----------------------------	---

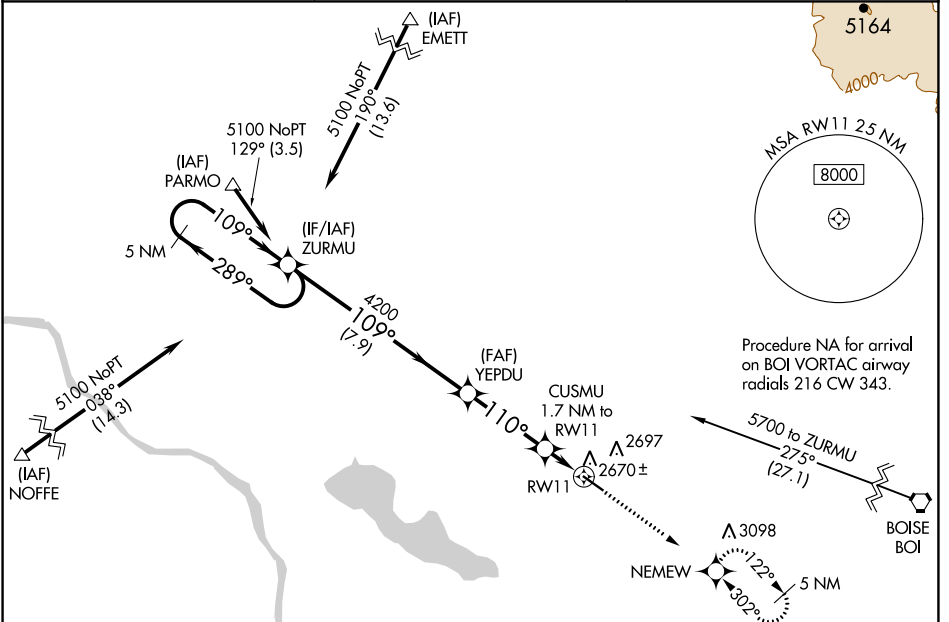
RNAV (GPS) RWY 11

NAMPA MUNI (MAN)

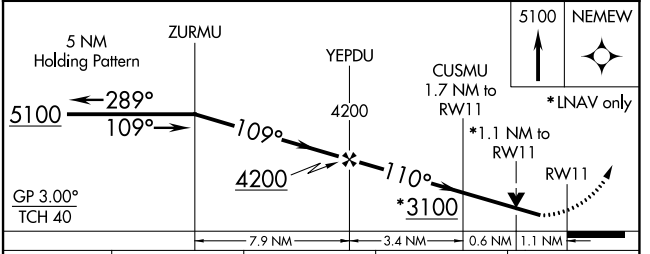
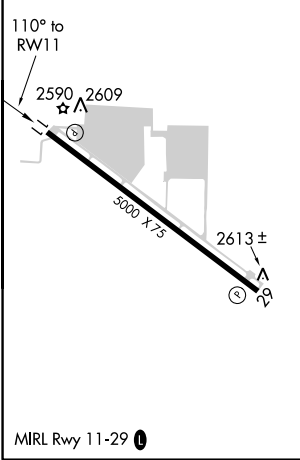
⚠ For uncompensated Baro-VNAV systems, LNAV/VNAV NA below -20°C (-4°F) or above 54°C (130°F). When Circling to Rwy 29 at night, operational VGSI required, remain on or above VGSI glidepath until threshold. DME/DME RNP-0.3 NA. Rwy 11 helicopter visibility reduction below ¾ SM NA.

MISSED APPROACH: Climb to 5100 direct NEMEW and hold, continue climb-in-hold to 5100.

AWOS-3 118.325	BIG SKY APP CON 119.6 269.4	UNICOM 122.7 (CTAF)
--------------------------	---------------------------------------	-------------------------------



ELEV 2537	TDZE 2537
-----------	-----------



CATEGORY	A	B	C	D
LPV DA	2787-7/8 250 (300-7/8)			
LNNAV/VNAV DA	2851-1 314 (400-1)			
LNNAV MDA	2920-1	383 (400-1)	2920-1 1/8	383 (400-1 1/8)
C CIRCLING	3060-1	523 (600-1)	3100-1 1/2 563 (600-1 1/2)	3220-2 1/4 683 (700-2 1/4)

NW-1, 28 NOV 2024 to 26 DEC 2024

NW-1, 28 NOV 2024 to 26 DEC 2024