

WAAS CH 90514 W27A	APP CRS 266°	Rwy Idg TDZE Apt Elev	5002 4053 4053
--	------------------------	-----------------------------	---

RNAV (GPS) RWY 27

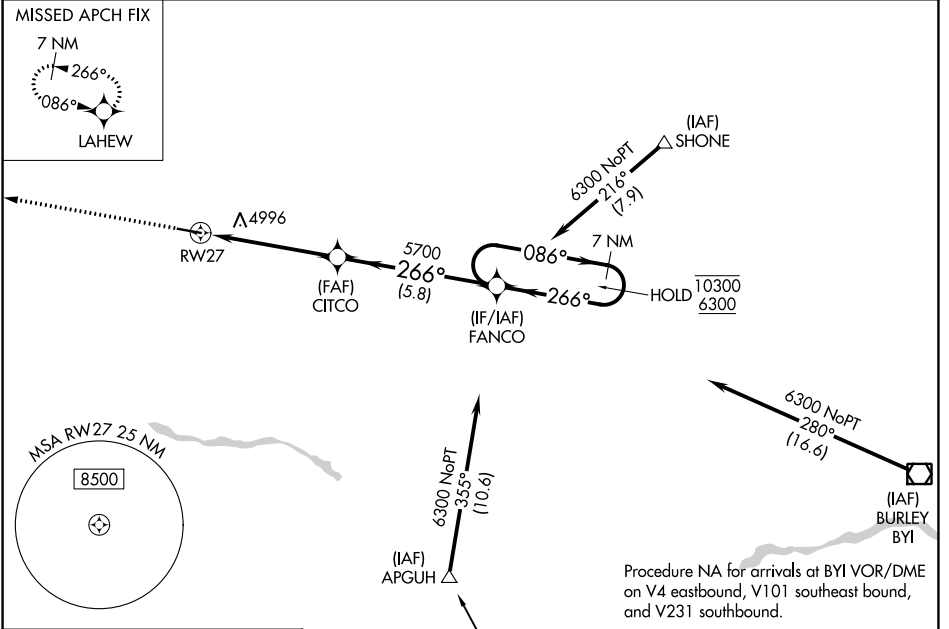
JEROME COUNTY (JER)

RNP APCH - GPS.

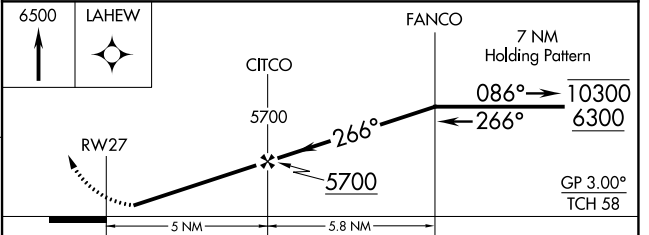
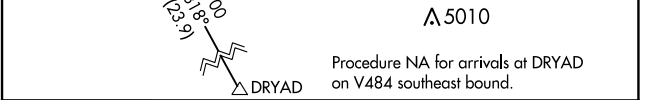
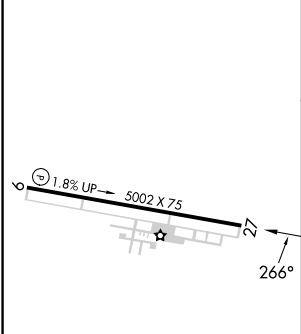
▼ Procedure NA at night. Circling NA north of Rwy 9-27.
 ▲ Rwy 27 helicopter visibility reduction below 1 SM NA.

MISSED APPROACH: Climb to 6500 direct LAHEW and hold.

ASOS 135.225	TWIN FALLS APP CON * 126.7 353.75	UNICOM 122.8 (CTAF) 0
------------------------	---	---------------------------------



ELEV 4053	TDZE 4053
-----------	-----------



CATEGORY	A	B	C	D
LPV DA	4403-1 350 (400-1)			
LNAV MDA	5300-1¼ 1247 (1300-1¼)	5300-1½ 1247 (1300-1½)	5300-3	1247 (1300-3)
CIRCLING	5300-1¼ 1247 (1300-1¼)	5300-1½ 1247 (1300-1½)	5300-3	1247 (1300-3)

NW-1, 28 NOV 2024 to 26 DEC 2024

NW-1, 28 NOV 2024 to 26 DEC 2024