

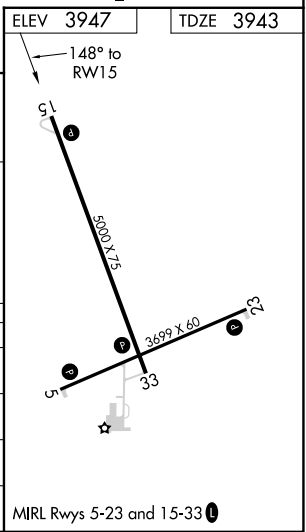
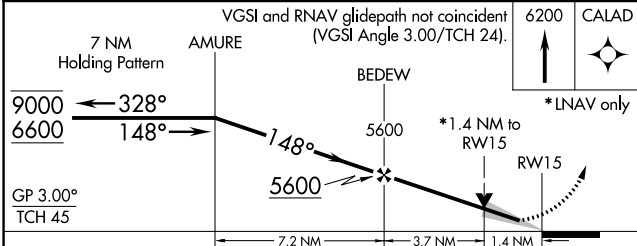
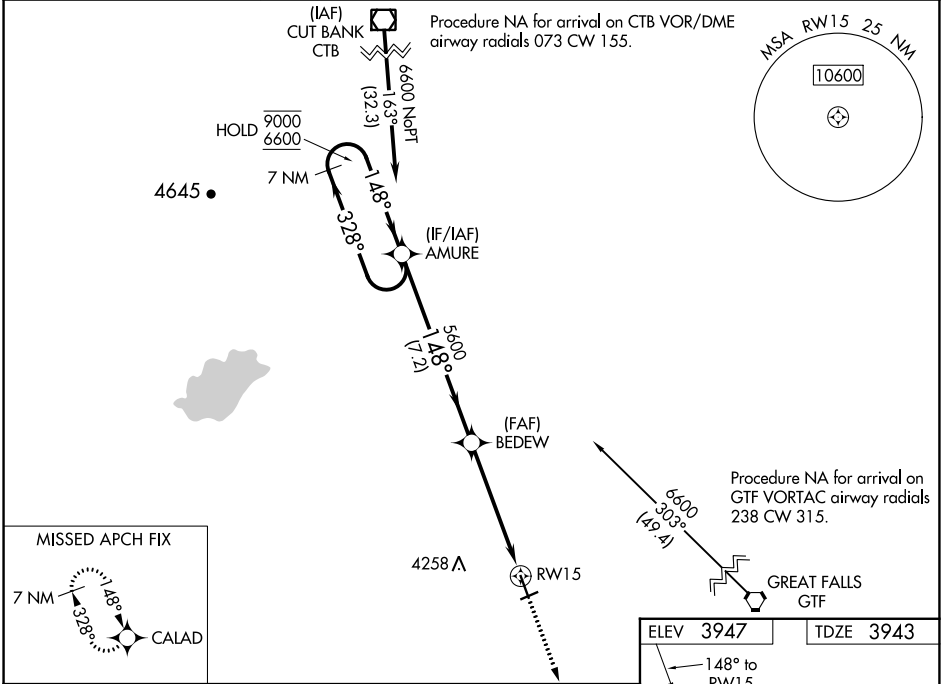
WAAS CH <b>70443</b> <b>W15A</b>	APP CRS <b>148°</b>	Rwy Idg TDZE Apt Elev	<b>5000</b> <b>3943</b> <b>3947</b>
--	------------------------	-----------------------------	---

# RNAV (GPS) RWY 15

CHOTEAU (CII)

RNP APCH. ▼ For uncompensated Baro-VNAV systems, LNAV/VNAV ▲ NA NA below -22° C or above 54° C.	MISSED APPROACH: Climb to 6200 direct CALAD and hold.
---	---

AWOS-2 <b>119.275</b>	SALT LAKE CITY CENTER <b>133.4 285.4</b>	UNICOM <b>122.8 (CTAF) 0</b>
--------------------------	---	---------------------------------



CATEGORY	A	B	C	D
LPV DA	4143-1 200 (200-1)			
LNAV/VNAV DA	4193-1 250 (300-1)			
LNAV MDA	4420-1 477 (500-1)	4420-1 $\frac{3}{8}$ 477 (500-1 $\frac{3}{8}$ )		
CIRCLING	4440-1 493 (500-1)	4600-1 $\frac{3}{4}$ 653 (700-1 $\frac{3}{4}$ )		4900-3 953 (1000-3)

NW-1, 28 NOV 2024 to 26 DEC 2024

NW-1, 28 NOV 2024 to 26 DEC 2024