

WAAS CH <b>65725</b> <b>W32A</b>	APP CRS <b>321°</b>	Rwy Idg <b>3300</b> TDZE <b>20</b> Apt Elev <b>20</b>
--	------------------------	---

# RNAV (GPS) RWY 32

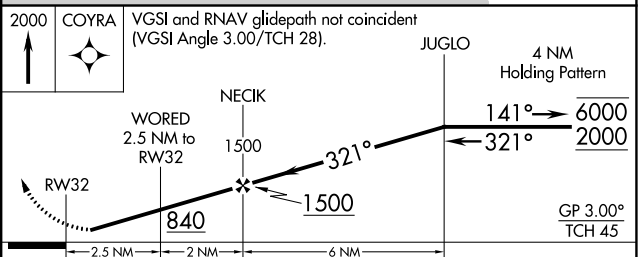
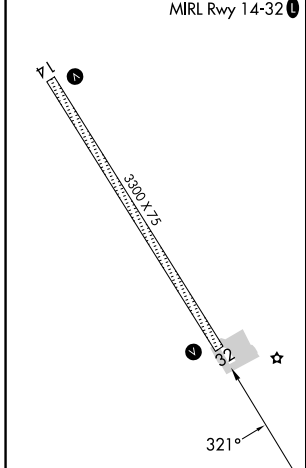
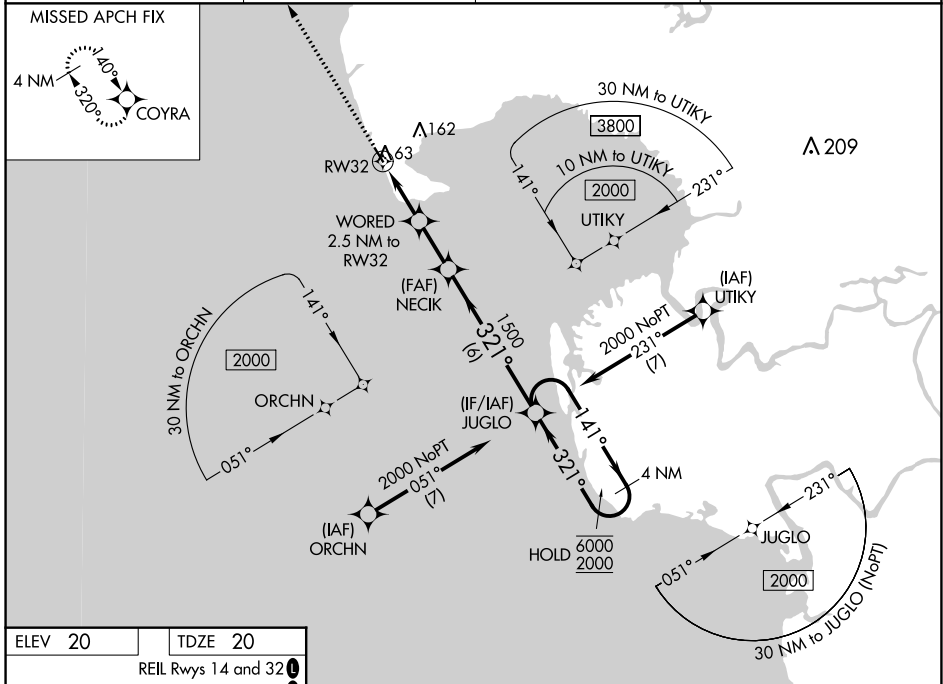
HOOPER BAY (HPB) (PAHP)

RNP APCH - GPS.

**⚠** Rwy 32 helicopter visibility reduction below 1 SM NA. For uncompensated Baro-VNAV systems, LNAV/VNAV NA below -19°C or above 54°C.  
**⚠** Straight-in Rwy 32 NA at night, Circling Rwy 32 NA at night.

MISSED APPROACH: Climb to 2000 direct COYRA and hold.

AWOS-3P <b>135.1</b>	ANCHORAGE CENTER <b>124.5</b>	KENAI RADIO <b>122.4</b>	CTAF <b>123.0</b>
-------------------------	----------------------------------	-----------------------------	----------------------



CATEGORY	A	B	C	D
LPV DA		270-1	250 (300-1)	
LNAV/VNAV DA		270-1	250 (300-1)	
LNAV MDA		320-1	300 (300-1)	
<b>Ⓛ</b> CIRCLING	400-1 380 (400-1)	480-1 460 (500-1)	480-1½ 460 (500-1½)	580-2 560 (600-2)