

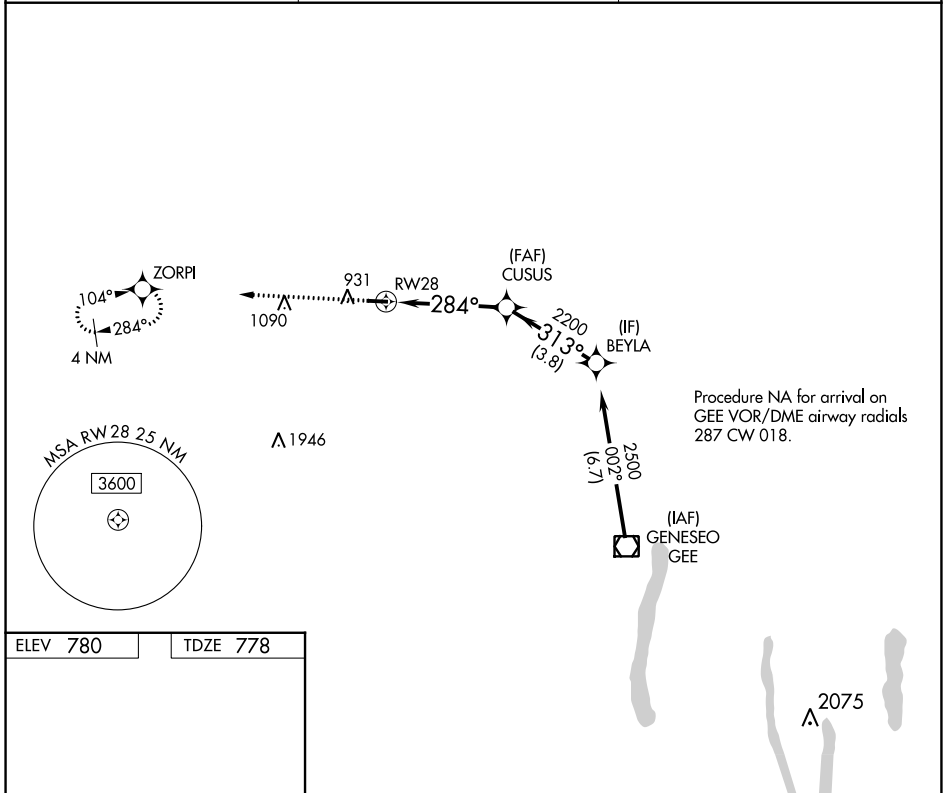
WAAS CH 69330 W28A	APP CRS 284°	Rwy Idg TDZE 778 Apt Elev 780	3854 778 780
--	------------------------	---	---

RNAV (GPS) RWY 28

LE ROY (5G~~0~~)

RNP APCH.	MISSED APPROACH: Climb to 3000 direct ZORPI and hold.
<p>Procedure NA at night. Rwy 28 helicopter visibility reduction below 1 SM NA.</p> <p>NA Use Frederick Douglass/Greater Rochester Intl altimeter setting.</p>	

ROC ASOS 124.825	ROCHESTER APP CON 123.7 322.3	UNICOM 122.8 (CTAF) 0
----------------------------	---	--



NE-2, 28 NOV 2024 to 26 DEC 2024

NE-2, 28 NOV 2024 to 26 DEC 2024

ELEV 780	TDZE 778	Visual Segment - Obstacles.			
CATEGORY	A	B	C	D	
LP MDA	1 240-1	462 (500-1)	NA		
LNAV MDA	1 240-1	462 (500-1)	NA		