

LOC/DME I-FQS 110.55 Chan 42 (Y)	APP CRS 052°	Rwy Idg 11004 TDZE 744 Apt Elev 744
-----------------------------------------------	------------------------	----------------------------------------------------------------

ILS or LOC RWY 5L

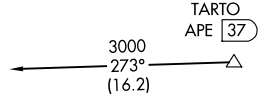
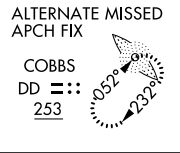
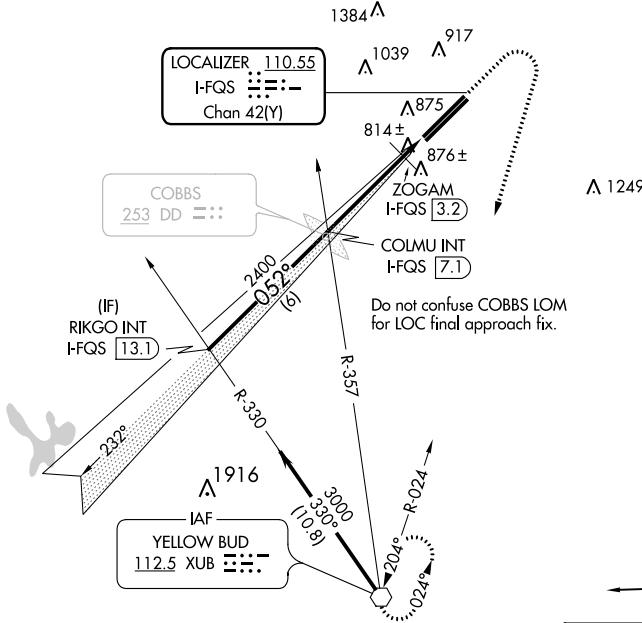
RICKENBACKER INTL (LCK)

⚠ Circling NA northwest of Rwy 5L-23R. When local altimeter setting not received, use John Glenn Columbus Intl altimeter setting and increase DA to 979 feet; increase all MDAs 40 feet and S-LOC 5L Cat C, Circling Cat D ¼ SM; increase ZOGAM fix minimums S-LOC 5L Cats C/D visibility ½ SM and Circling Cat D ¼ SM.



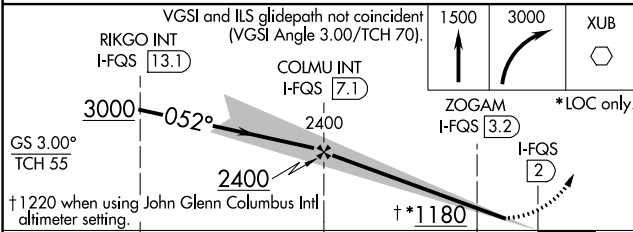
MISSED APPROACH: Climb to 1500 then climbing right turn to 3000 direct XUB VOR and hold.

ATIS 132.75	COLUMBUS APP CON 134.0 279.6	RICK TOWER 120.05 348.4	GND CON 125.275 275.8	CLNC DEL 125.275 275.8
-----------------------	----------------------------------------	-----------------------------------	---------------------------------	----------------------------------

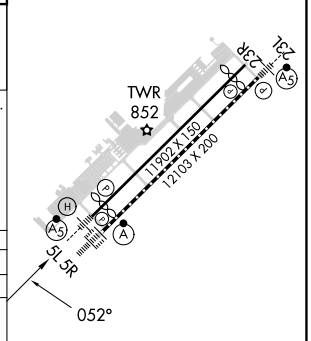


EC-2, 28 NOV 2024 to 26 DEC 2024

EC-2, 28 NOV 2024 to 26 DEC 2024



ELEV 744	D	TDZE 744
----------	---	----------



CATEGORY	A	B	C	D
S-ILS 5L	944-½		200 (200-½)	
S-LOC 5L	1180-½	436 (500-½)	1180-¾	436 (500-¾)
CIRCLING	1240-1	496 (500-1)	1280-1½	1400-2
			536 (600-1½)	656 (700-2)
ZOGAM FIX MINIMUMS				
S-LOC 5L	1080-½		336 (400-½)	
CIRCLING	1240-1	496 (500-1)	1280-1½	1400-2
			536 (600-1½)	656 (700-2)

TDZ/CL Rwy 5R					
REIL Rwy 23R					
HIRL Rwys 5L-23R and 5R-23L					
FAF to MAP 5 NM					
Knots	60	90	120	150	180
Min:Sec	5:00	3:20	2:30	2:00	1:40