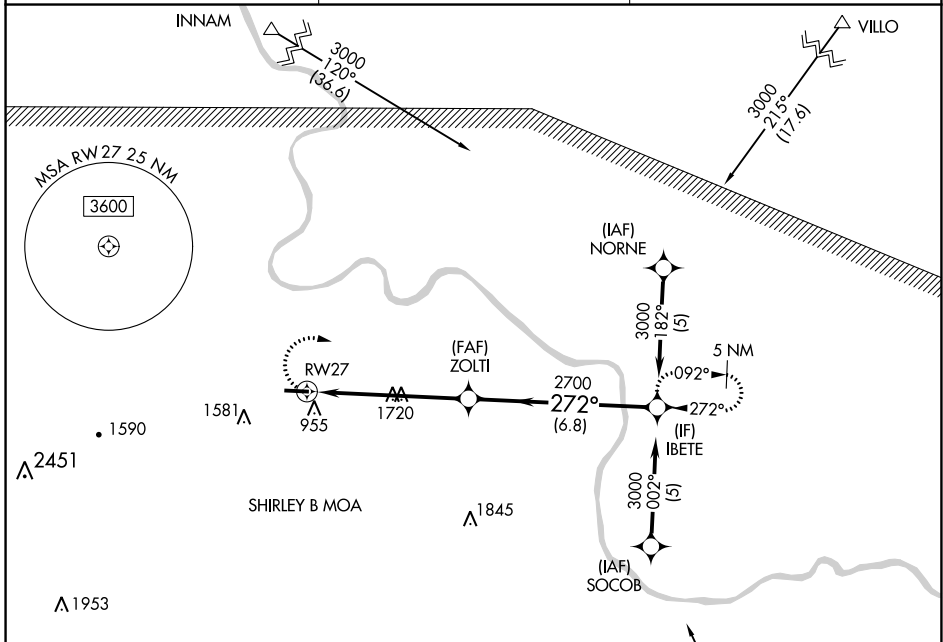


| | |
|------------------------|------------------------|
| APP CRS 272° | Rwy Idg 4502 |
| | TDZE 796 |
| | Apt Elev 805 |

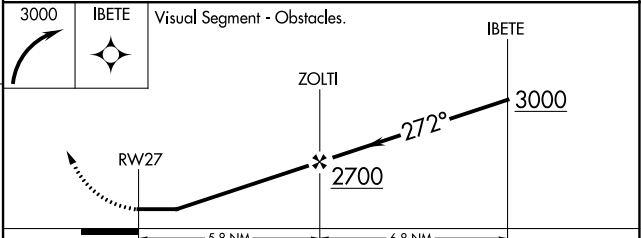
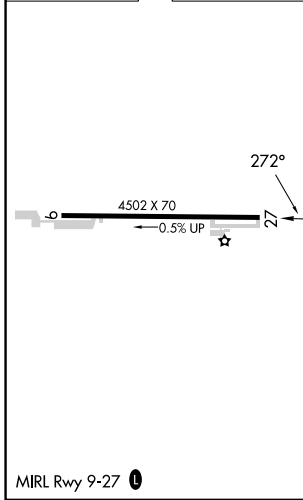
RNAV (GPS) RWY 27

MOUNTAIN VIEW WILCOX MEML FLD (7M2)

| | | |
|--|--|--|
| <p>NA DME/DME RNP-0.3 NA. Rwy 27 helicopter visibility reduction below 1 SM NA. Procedure NA at night. Use Flippers altimeter setting; if not received, use Batesville altimeter setting and increase all MDAs 20 feet.</p> | <p>MISSED APPROACH: Climbing right turn to 3000 direct IBETE and hold.</p> | |
| <p>FLP AWOS-3 132.075</p> | <p>MEMPHIS CENTER 126.85 281.55</p> | <p>UNICOM 122.7 (CTAF) 0</p> |



| | |
|----------|----------|
| ELEV 805 | TDZE 796 |
|----------|----------|



| CATEGORY | A | B | C | D |
|----------|---------------------------|---------------------------|-------------------------|----|
| LNAV MDA | 2120-1¼ 1324 (1400-1¼) | 2120-1½ 1324 (1400-1½) | 2120-3 1324 (1400-3) | NA |
| CIRCLING | 2120-1¼ 1315 (1400-1¼) | 2120-1½ 1315 (1400-1½) | 2120-3 1315 (1400-3) | NA |

SC-1, 28 NOV 2024 to 26 DEC 2024

SC-1, 28 NOV 2024 to 26 DEC 2024