

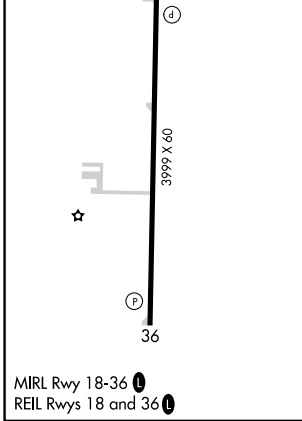
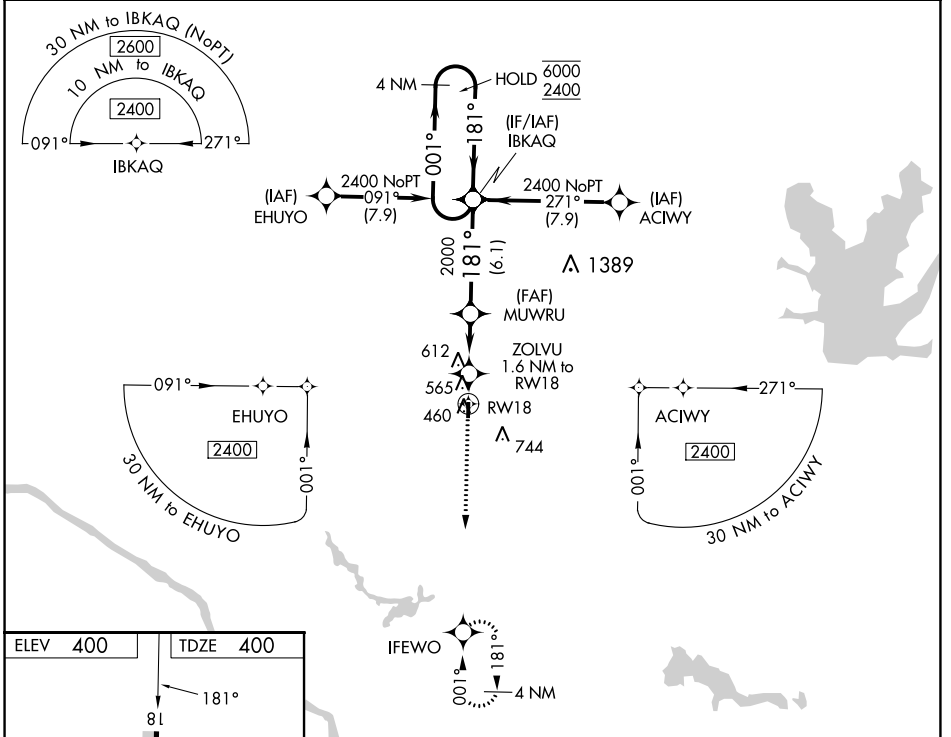
WAAS CH 57932 W18A	APP CRS 181°	Rwy Idg TDZE 400 Apt Elev 400
---------------------------------	------------------------	---

RNAV (GPS) RWY 18

PINCKNEYVILLE/DU QUOIN (PJY)

RNP APCH.	MISSED APPROACH: Climb to 2400 direct IFEWO and hold.
Baro-VNAV NA. Use Carbondale-Murphysboro altimeter setting.	

KANSAS CITY CENTER 127.475 346.275	UNICOM 122.8 (CTAF) 0
--	--



2400	IFEWO	VGSI and RNAV glidepath not coincident (VGSI Angle 3.00/TCH 44).	4 NM Holding Pattern
*LNAV only.		MUWRU 2000	IBKAQ 001° → 6000 ← 181° 2400
RW18		ZOLVU 1.6 NM to RW18	GP 3.00° TCH 50
1.6 NM		3.3 NM	6.1 NM

CATEGORY	A	B	C	D
LPV DA	682-1 282 (300-1)			
LNAV/VNAV DA	808-1 408 (500-1 1/2)			
LNAV MDA	900-1 500 (500-1)		900-1 3/8 500 (500-1 1/2)	
CIRCLING	960-1 560 (600-1)		1080-2 680 (700-2)	1080-2 1/4 680 (700-2 1/4)

EC-3, 28 NOV 2024 to 26 DEC 2024

EC-3, 28 NOV 2024 to 26 DEC 2024