

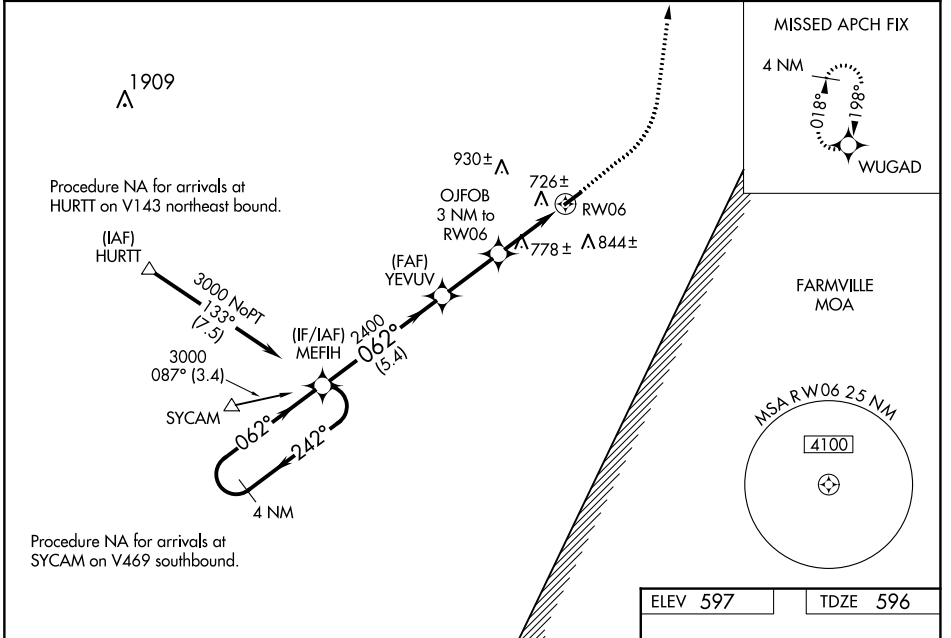
WAAS CH <b>82333</b> <b>W06A</b>	APP CRS <b>062°</b>	Rwy Idg TDZE Apt Elev	<b>3798</b> <b>596</b> <b>597</b>
--	------------------------	-----------------------------	---

**RNAV (GPS) RWY 6**  
BROOKNEAL/CAMPBELL COUNTY (ØV4)

**▽** For uncompensated Baro-VNAV systems, LNAV/VNAV NA below -16°C (3°F) or above 54°C (130°F). DME/DME RNP-0.3 NA. When local altimeter setting not received, use Lynchburg Rgnl/Preston Glenn Fld altimeter setting and increase all DA 81 feet and all MDA 100 feet, increase LPV all Cats visibility 1/8 mile, and increase LNAV/VNAV all Cats visibility 1/4 mile. Rwy 6 helicopter visibility reduction below 3/4 SM NA. Baro VNAV and VDP NA when using Lynchburg Rgnl/Preston Glenn Fld altimeter setting.

**▲** MISSED APPROACH: Climb to 1100 then climbing left turn to 3000 direct WUGAD and hold.

AWOS-3 <b>120,575</b>	ROANOKE APP CON <b>135,0 254,325</b>	UNICOM <b>122.7 (CTAF) Ø</b>
--------------------------	---	---------------------------------



NE-3, 28 NOV 2024 to 26 DEC 2024

NE-3, 28 NOV 2024 to 26 DEC 2024

4 NM Holding Pattern		MEFIH		YEVUV		1100		3000		WUGAD	
3000 ← 242°		062° →		062°		2400		*1.3 NM to RW06		*LNAV only	
GP 3.00°		TCH 45		*1580		OJFOB 3 NM to RW06		RW06		3798 X 60	
5.4 NM		2.5 NM		1.7 NM		1.3 NM				062°	
CATEGORY	A	B	C	D							
LPV DA	868-1	272 (300-1)			NA						
LNAV/VNAV DA	1031-1½	435 (500-1½)			NA						
LNAV MDA	1040-1	444 (500-1)			NA						
CIRCLING	1120-1 523 (600-1)	1180-1 583 (600-1)			NA						

MIRL Rwy 6-24 Ø  
REIL Rws 6 and 24 Ø