

LOC/DME I-EVW 108.9 Chan 26	APP CRS 234°	Rwy Idg 7300 TDZE 7143 Apt Elev 7143
--	------------------------	---

ILS or LOC/DME RWY 23

EVANSTON-UINTA COUNTY BURNS FLD (E V W)

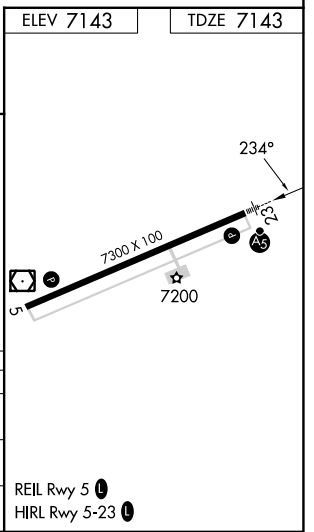
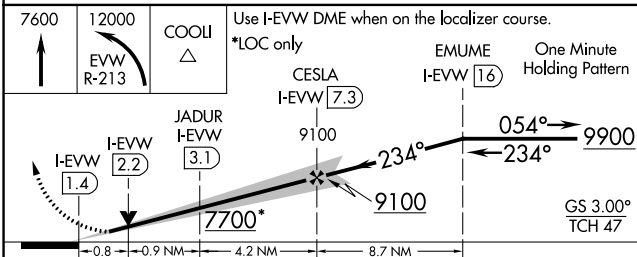
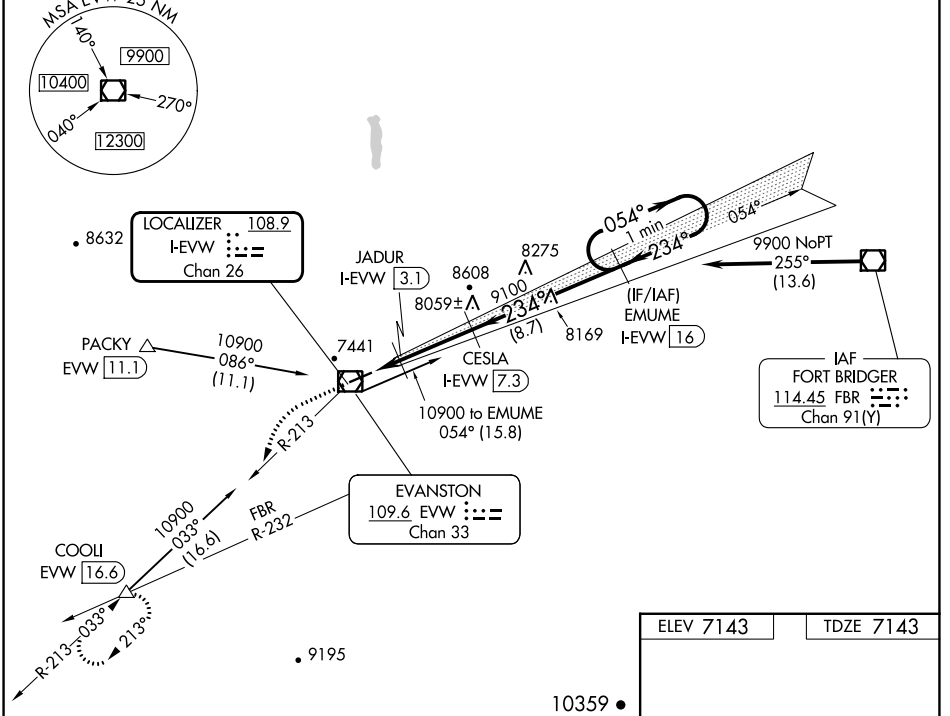
<p>⚠ For inoperative MALS, increase S-LOC 23 Cat D visibility to 1 mile. When local altimeter setting not received, procedure NA.</p>	<p>MALS AS</p>	<p>MISSED APPROACH: Climb to 7600 then climbing left turn to 12000 via EVW VOR/DME R-213 to COOL/ EVW VOR/DME 16.6 DME and hold, continue climb-in-hold to 12000.</p>
--	---------------------------	--

ASOS 120.0	SALT LAKE CENTER 127.7 354.125	GCO 121.72	UNICOM 123.0 (CTAF)
----------------------	--	----------------------	-------------------------------

Procedure NA for arrivals at FBR VOR/DME via airway radials 213 CW 285.

NW-1, 28 NOV 2024 to 26 DEC 2024

NW-1, 28 NOV 2024 to 26 DEC 2024



CATEGORY	A	B	C	D
S-ILS 23	7343-1/2		200 (200-1/2)	
S-LOC 23	7440-1/2		297 (300-1/2)	
CIRCLING	7680-1 537 (600-1)	7760-1 617 (700-1)	7800-1 3/4 657 (700-1 3/4)	7440-3/4 297 (300-3/4) 8000-2 3/4 857 (900-2 3/4)

REIL Rwy 5
HIRL Rwy 5-23