

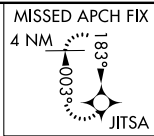
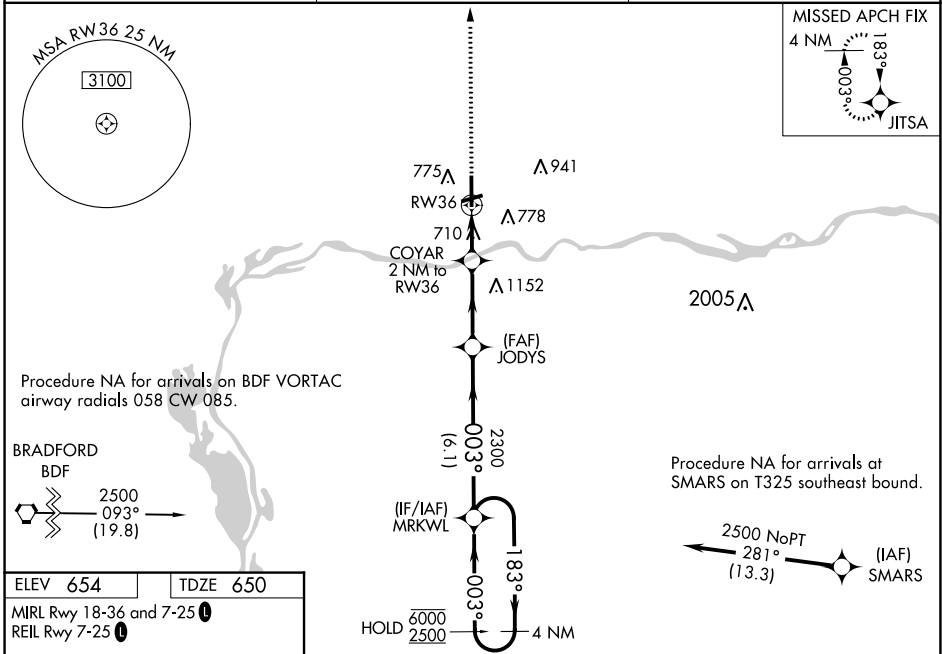
WAAS CH 82037 W36A	APP CRS 003°	Rwy Idg TDZE 650 Apt Elev 654	5999
--	------------------------	---	-------------

RNAV (GPS) RWY 36

ILLINOIS VALLEY RGNL-WALTER A DUNCAN FLD (VYS)

RNP APCH - GPS.	ODALS	MISSED APPROACH: Climb to 2500 direct JITSA and hold.
<p>⚠ Inop table does not apply.</p> <p>⚠ For uncompensated Baro-VNAV systems, LNAV/VNAV NA below -16°C or above 54°C.</p>		

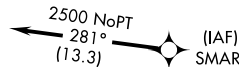
AWOS-3 120.025	CHICAGO CENTER 123.75 259.1	UNICOM 123.0 (CTAF)
--------------------------	---------------------------------------	-------------------------------



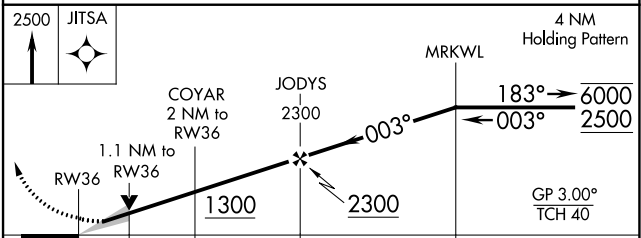
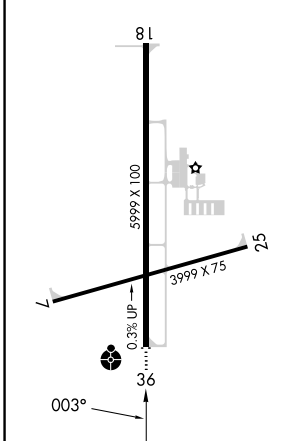
Procedure NA for arrivals on BDF VORTAC airway radials 058 CW 085.



Procedure NA for arrivals at SMARS on T325 southeast bound.



ELEV 654	TDZE 650
MIRL Rwy 18-36 and 7-25	REIL Rwy 7-25



CATEGORY	A	B	C	D
LPV DA		900-1	250 (300-1)	
LNAV/VNAV DA		900-1	250 (300-1)	
LNAV MDA		1020-1	370 (400-1)	
<input checked="" type="checkbox"/> CIRCLING	1120-1 466 (500-1)	1240-1 586 (600-1)	1260-1¾ 606 (700-1¾)	1460-2½ 806 (900-2½)