

WAAS CH <b>61208</b> <b>W30A</b>	APP CRS <b>304°</b>	Rwy Idg <b>3197</b> TDZE <b>455</b> Apt Elev <b>455</b>
--	------------------------	---

# RNAV (GPS) RWY 30

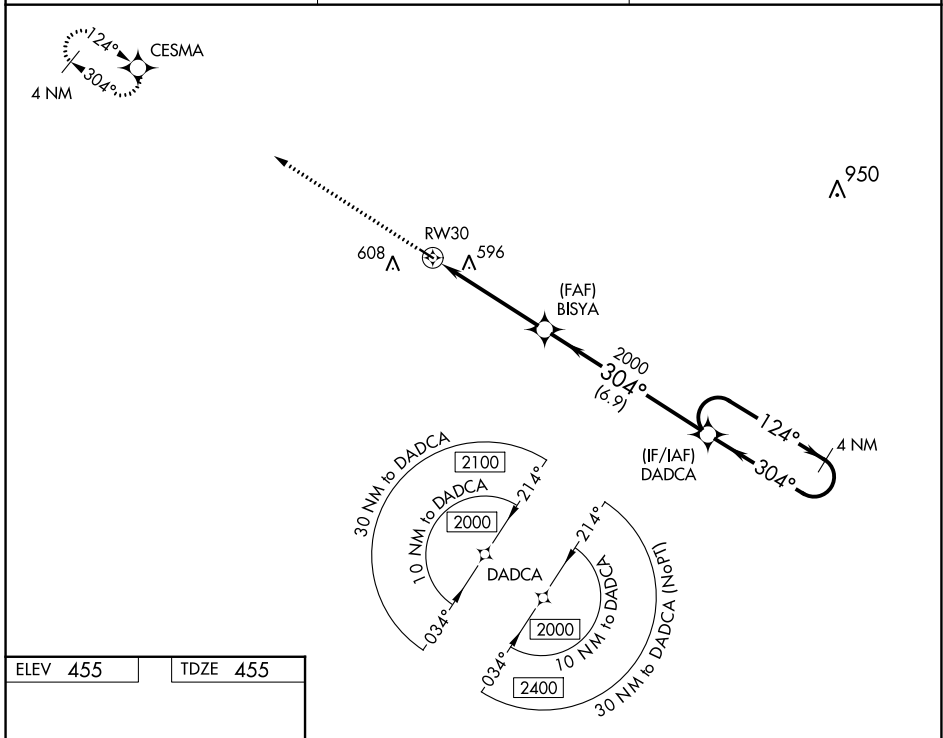
PRENTISS-JEFFERSON DAVIS COUNTY (M43)

**▼** Baro-VNAV NA, DME/DME RNP-0.3 NA. Use Brookhaven altimeter setting; when not received, use Hattiesburg/Laurel altimeter setting and increase all DA 27 feet and all MDA 40 feet. Helicopter visibility reduction below  $\frac{3}{4}$  SM NA.

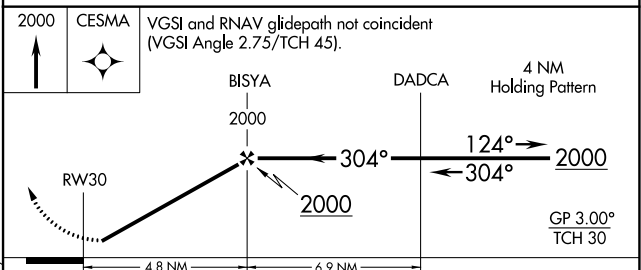
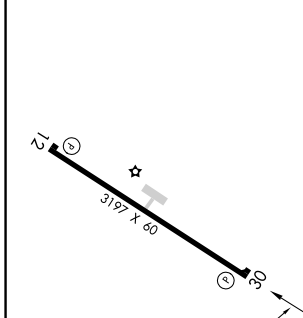
**▲** NA

**MISSED APPROACH:**  
Climb to 2000 direct CESMA and hold.

1R7 AWOS-3P <b>118.125</b>	HOUSTON CENTER <b>126.8 327.8</b>	UNICOM <b>122.8 (CTAF) 0</b>
-------------------------------	--------------------------------------	---------------------------------



ELEV <b>455</b>	TDZE <b>455</b>
-----------------	-----------------



CATEGORY	A	B	C	D
LPV DA	770-1 $\frac{1}{8}$	315 (400-1 $\frac{1}{8}$ )		NA
LNNAV/VNAV DA	797-1 $\frac{1}{4}$	342 (400-1 $\frac{1}{4}$ )		NA
LNNAV MDA	980-1	525 (600-1)		NA
<b>C</b> CIRCLING	1020-1 565 (600-1)	1080-1 625 (700-1)		NA

SC-4, 28 NOV 2024 to 26 DEC 2024

SC-4, 28 NOV 2024 to 26 DEC 2024