

(ESTRR5.ESTRR) 24081

# ESTRR FIVE DEPARTURE (RNAV)

LINCOLNTON-LINCOLN COUNTY RGNL (IPJ)

AL-6894 (FAA)

LINCOLNTON, NORTH CAROLINA

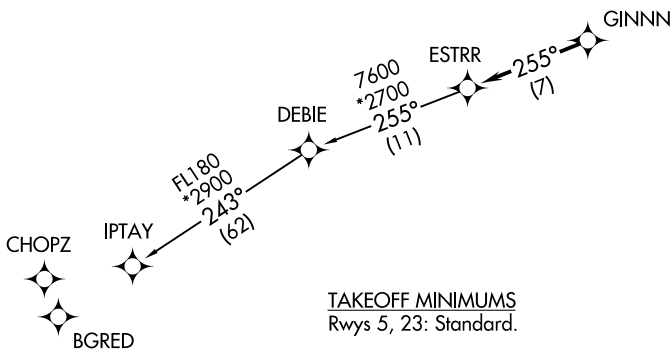
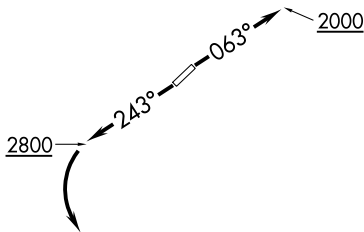
CHARLOTTE DEP CON  
134.75 257.2  
AWOS-3  
119.675  
CLNC DEL (GCO)  
124.9  
UNICOM (CTAF)  
123.05

RNAV 1 - DME/DME/IRU or GPS.

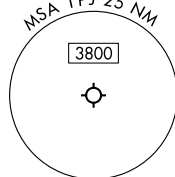
RADAR required.

**TOP ALTITUDE:  
3000**

- NOTE: For turbo jets only.
- NOTE: If unable to accept climb rates, advise ATC on initial contact.
- NOTE: Transponder code will be issued via PDC or Charlotte CLNC DEL.
- NOTE: Upon reaching 10000 MSL, accelerate to and maintain 280K, if unable advise ATC.



TAKEOFF MINIMUMS  
Rwys 5, 23: Standard.



NOTE: Chart not to scale.

SE-2, 28 NOV 2024 to 26 DEC 2024

SE-2, 28 NOV 2024 to 26 DEC 2024



## DEPARTURE ROUTE DESCRIPTION

TAKEOFF RUNWAY 5: Climb on heading 063° to 2000 before proceeding on course, then on heading assigned by ATC, thence. . . .

TAKEOFF RUNWAY 23: Climb on heading 243° to 2800 before turning left, then on heading assigned by ATC, thence. . . .

. . . .on RADAR vectors to GINNN, then on track 255° to ESTRR, then on IPTAY Transition. Maintain 3000, expect clearance to filed altitude within 10 minutes after departure.

IPTAY TRANSITION (ESTRR5.IPTAY)

# ESTRR FIVE DEPARTURE (RNAV)

(ESTRR5.ESTRR) 21MAR24

LINCOLNTON, NORTH CAROLINA  
LINCOLNTON-LINCOLN COUNTY RGNL (IPJ)