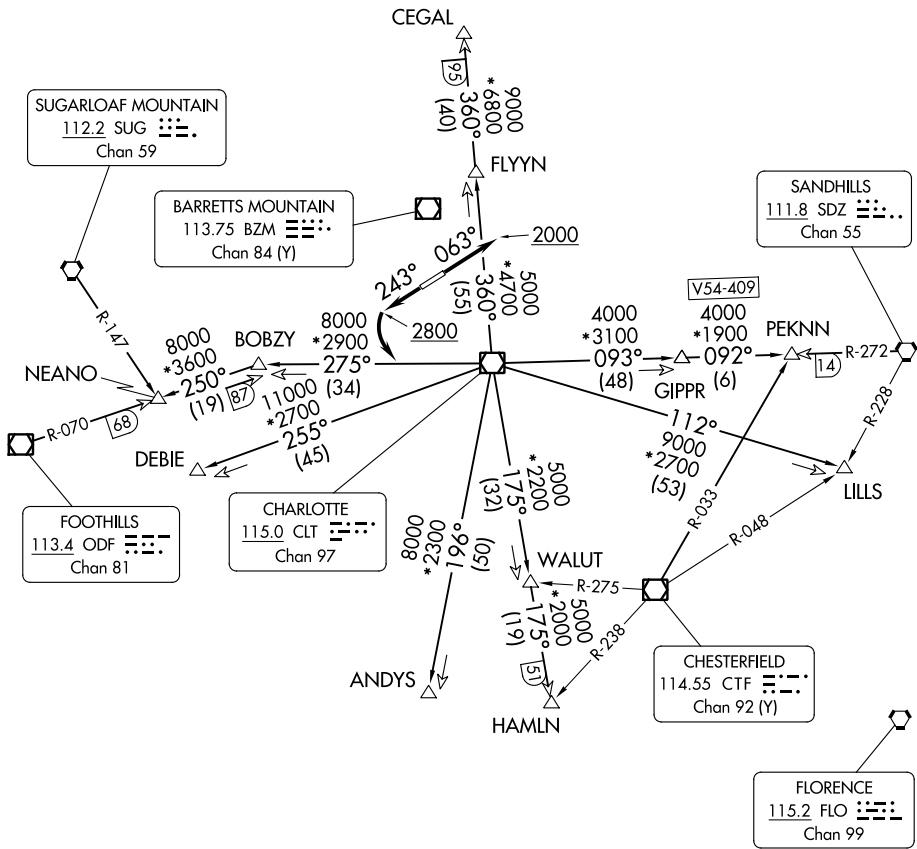


CHARLOTTE DEP CON
 134.75 257.2
 AWOS-3
 119.675
 CLNC DEL (GCO)
 124.9
 UNICOM (CTAF)
 123.05

**TOP ALTITUDE:
 3000**

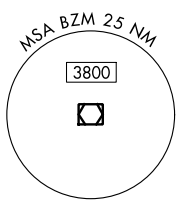
RADAR and DME required.

TAKEOFF MINIMUMS
 Rwy 5, 23: Standard.



SE-2, 28 NOV 2024 to 26 DEC 2024

SE-2, 28 NOV 2024 to 26 DEC 2024



NOTE: For propeller aircraft only.
 NOTE: Turboprops: Operate in a manner that will result in best forward speed and climb rate.
 NOTE: Transponder code will be issued via Charlotte clearance delivery.

(CONTINUED ON FOLLOWING PAGE)

NOTE: Chart not to scale.