

(WEAZL5.WEAZL) 24081

WEAZL FIVE DEPARTURE (RNAV)

LINCOLN-TON-LINCOLN COUNTY RGNL (IPJ)
AL-6894 (FAA) LINCOLN-TON, NORTH CAROLINA

RNAV 1 - DME/DME/IRU or GPS.

RADAR required.

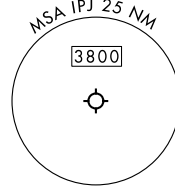
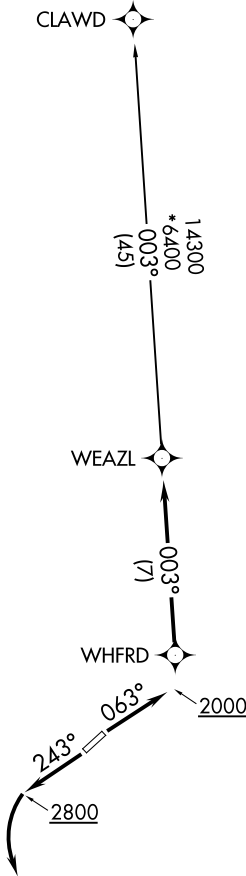
TOP ALTITUDE:
3000

CHARLOTTE DEP CON
134.75 257.2
AWOS-3
119.675
CLNC DEL (GCO)
124.9
UNICOM
123.05

TAKEOFF MINIMUMS

Rwys 5, 23: Standard.

- NOTE: For turbo jets only.
- NOTE: If unable to accept climb rates, advise ATC on initial contact.
- NOTE: Upon reaching 10000 MSL, accelerate to and maintain 280K, if unable advise ATC.



NOTE: Chart not to scale.



DEPARTURE ROUTE DESCRIPTION

TAKEOFF RUNWAY 5: Climb on heading 063° to 2000 before proceeding on course, then on heading assigned by ATC, thence

TAKEOFF RUNWAY 23: Climb on heading 243° to 2800 before turning left, then on heading assigned by ATC, thence

. . . . on RADAR vectors to WHFRD, then on track 003° to WEAZL. Then on CLAWD Transition. Maintain 3000, expect clearance to filed altitude within 10 minutes after departure.

CLAWD TRANSITION (WEAZL5.CLAWD)

WEAZL FIVE DEPARTURE (RNAV)

(WEAZL5.WEAZL) 21MAR24

LINCOLN-TON, NORTH CAROLINA
LINCOLN-TON-LINCOLN COUNTY RGNL (IPJ)

SE-2, 28 NOV 2024 to 26 DEC 2024

SE-2, 28 NOV 2024 to 26 DEC 2024