

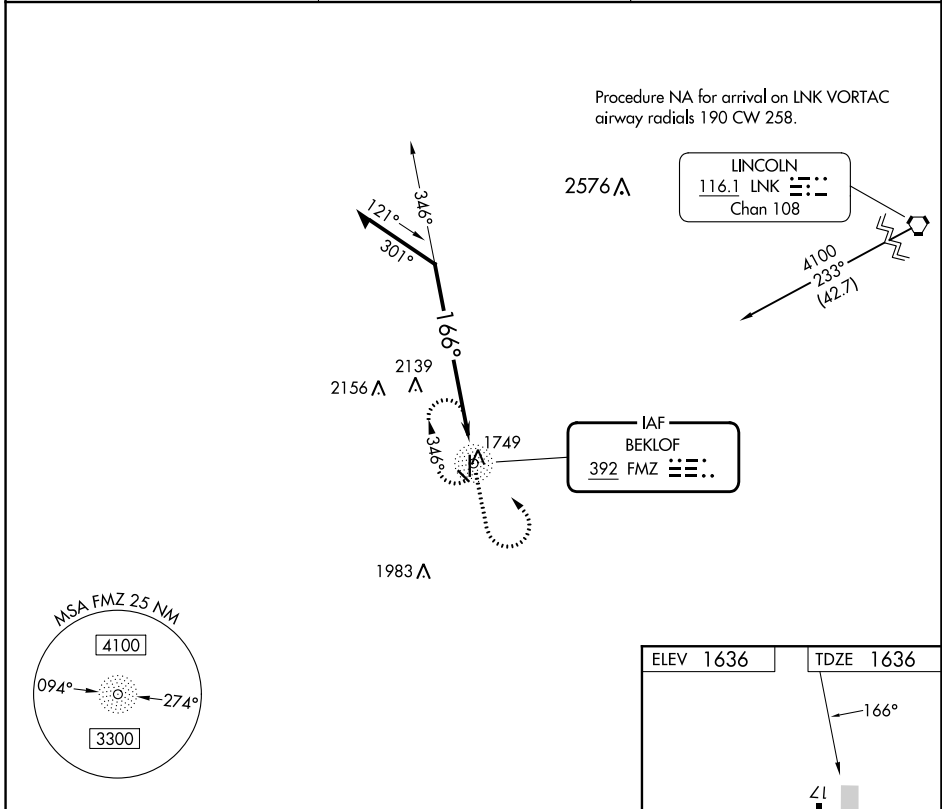
NDB FMZ <b>392</b>	APP CRS <b>166°</b>	Rwy Idg <b>4317</b> TDZE <b>1636</b> Apt Elev <b>1636</b>
-----------------------	------------------------	--

**NDB RWY 17**  
FAIRMONT STATE (F<sup>M</sup>Z)

**NA** Circling Rwy 12, 30 NA at night.  
Use York altimeter setting; when not received, use Hebron altimeter setting and increase all MDAs 40 feet.

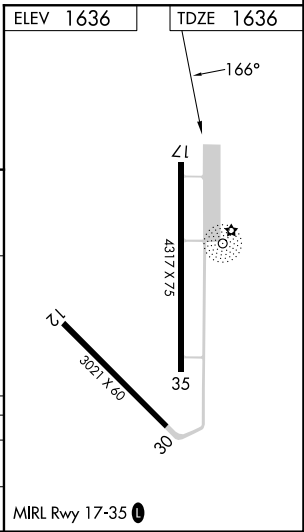
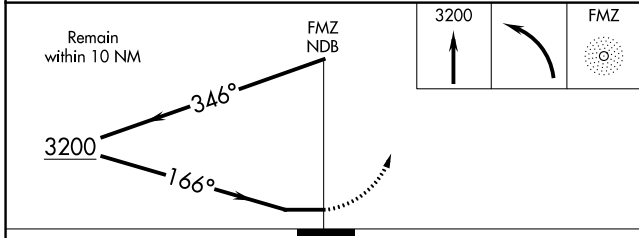
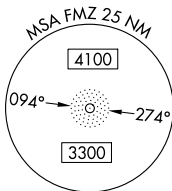
MISSED APPROACH: Climb to 3200 then left turn direct FMZ NDB and hold.

JYR AWOS-3 <b>124.175</b>	MINNEAPOLIS CENTER <b>119.4 278.8</b>	CTAF <b>122.9</b>
------------------------------	--	----------------------



NC-2, 28 NOV 2024 to 26 DEC 2024

NC-2, 28 NOV 2024 to 26 DEC 2024



CATEGORY	A	B	C	D
S-17	2540-1¼	904 (1000-1¼)		NA
<b>C</b> CIRCLING	2540-1¼	904 (1000-1¼)		NA