

WAAS CH 48843 W09A	APP CRS 092°	Rwy Idg 4300 TDZE 489 Apt Elev 494
--	------------------------	---

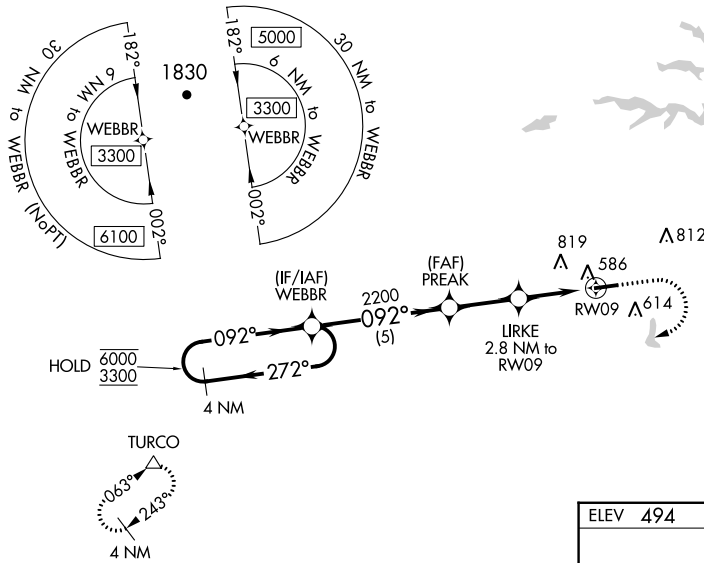
RNAV (GPS) RWY 9
LOUISA COUNTY/FREEMAN FLD (LKU)

RNP APCH.

⚠ Circling NA north of Rwy 9-27. Rwy 9 helicopter visibility reduction below 3/4 SM NA.
 ⚠ For uncompensated Baro-VNAV systems, LNAV/VNAV NA below -15°C or above 54° C.
 When local altimeter setting not received, use Orange altimeter setting and increase LPV DA to 775 feet, LNAV/VNAV DA to 784 feet and MDA 40 feet; increase LPV and LNAV/VNAV visibility 1/2 SM. Baro-VNAV and VDP NA when using Orange altimeter setting.

MISSED APPROACH: Climb to 1000 then climbing right turn to 3300 direct TURCO and hold.

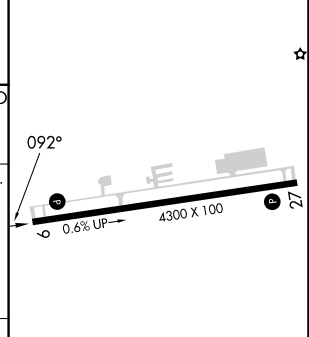
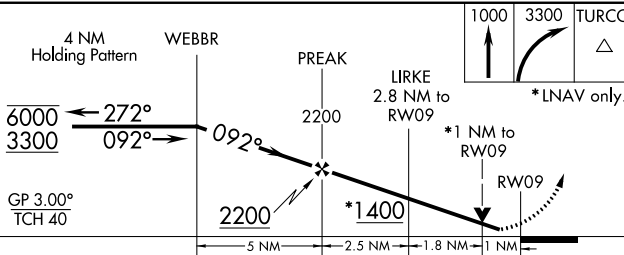
AWOS-3 119,475	POTOMAC APP CON 132.85 323.125	UNICOM 122.975 (CTAF) 1
--------------------------	--	--



NE-3, 28 NOV 2024 to 26 DEC 2024

NE-3, 28 NOV 2024 to 26 DEC 2024

ELEV 494	TDZE 489
----------	----------



CATEGORY	A	B	C	D
LPV DA	739-3/4	250 (300-3/4)		NA
LNAV/VNAV DA	748-3/4	259 (300-3/4)		NA
LNAV MDA	840-1	351 (400-1)		NA
CIRCLING	900-1 406 (500-1)	960-1 466 (500-1)		NA

REIL Rwy 9 and 27 **1**
MIRL Rwy 9-27 **1**