

APP CRS	Rwy Idg	3707
174°	TDZE	1561
	Apt Elev	1561

RNAV (GPS) RWY 17

ARLEDGE FLD (F56)

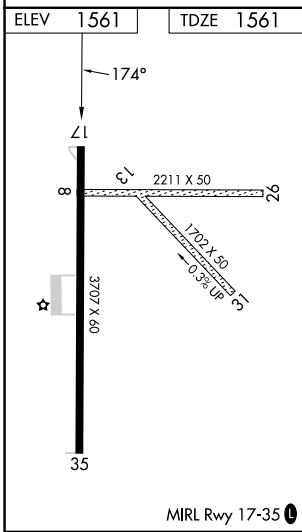
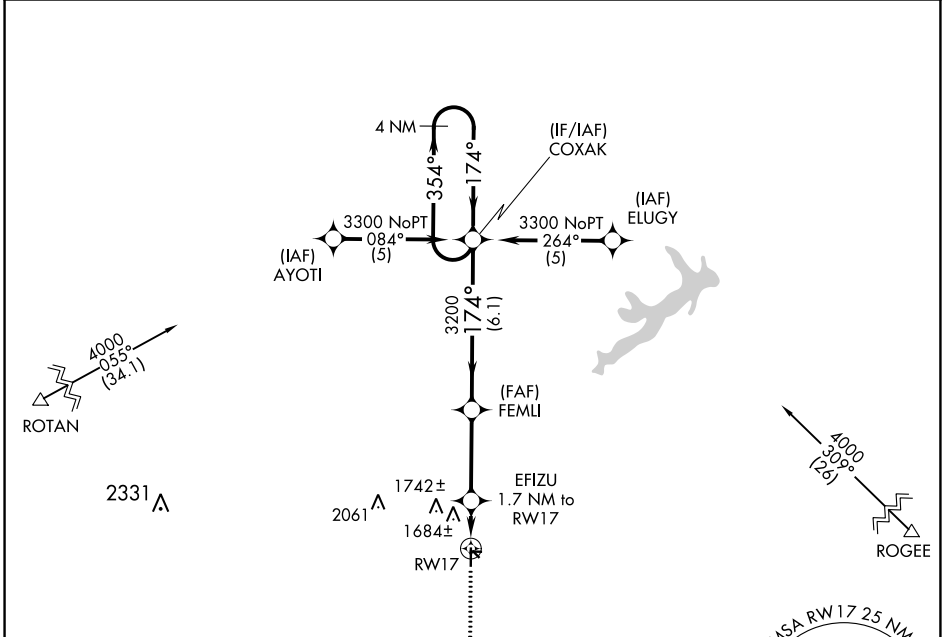
RNP APCH-GPS.

Procedure NA at night. Use Abilene Rgnl altimeter setting; when not received use Breckenridge altimeter setting and increase all MDAs 40 feet. Rwy 17 helicopter visibility reduction below

NA 1 SM NA. Circling NA to Rwys 8/26 and 13/31.

MISSED APPROACH:
Climb to 3300
direct HINTA and hold.

ABILENE APP CON	UNICOM
127.2 282.3	122.8 (CTAF) 0



ELEV	1561	TDZE	1561
3300	HINTA	FEMLI	COXAK
↑	★		4 NM Holding Pattern
	EFIZU		
	1.7 NM to RW17	3.04°	
		TCH 40	
	2120	3200	3300
	1.7 NM	3.3 NM	6.1 NM
CATEGORY	A	B	C
LNAV MDA	2040-1	479 (500-1)	2040-1 ³ / ₈ 479 (500-1 ³ / ₈)
CIRCLING	2100-1 539 (600-1)	2200-1 639 (700-1)	2220-1 ³ / ₄ 659 (700-1 ³ / ₄)
D	NA	NA	NA

SC-2, 28 NOV 2024 to 26 DEC 2024

SC-2, 28 NOV 2024 to 26 DEC 2024