

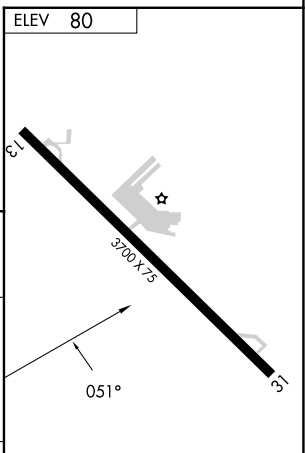
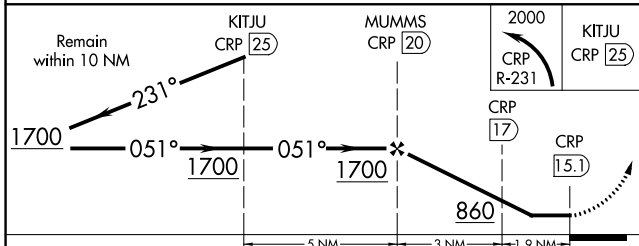
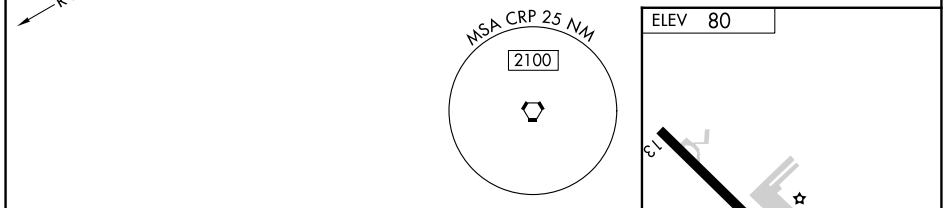
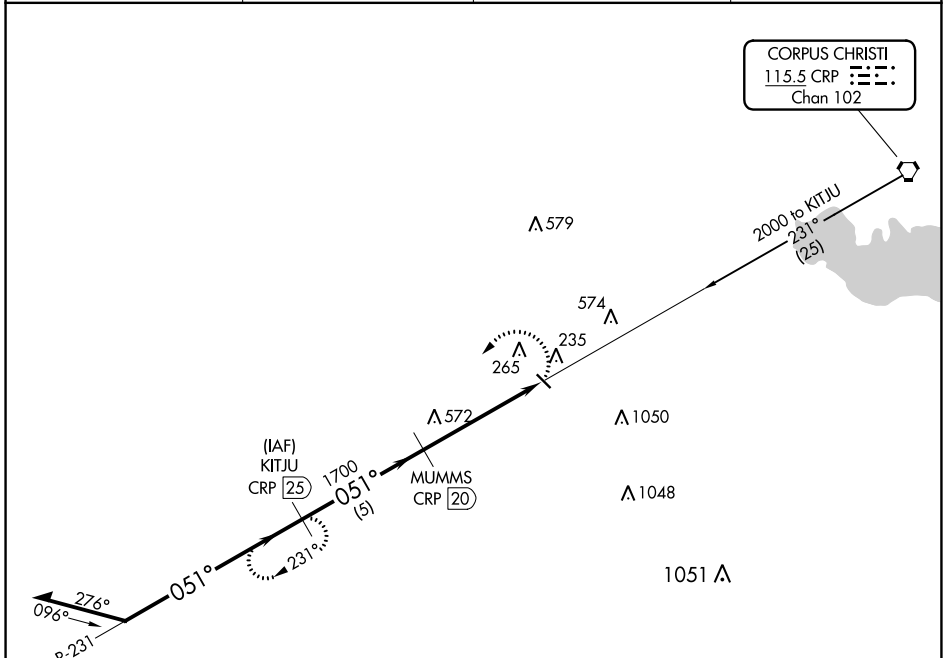
VORTAC CRP 115.5 Chan 102	APP CRS 051°	Rwy Idg TDZE Apt Elev N/A N/A 80
---	------------------------	--

VOR/DME-A
NUECES COUNTY (RBO)

NA When local altimeter setting not received, use Corpus Christi Intl altimeter setting. Circling not authorized northeast of Rwy 13-31.

MISSED APPROACH: Climbing left turn to 2000 via CRP R-231 to KITJU/CRP 25 DME and hold.

AWOS-3 118.175	KINGSVILLE APP CON * 119.9 290.45	CTAF 122.9	122.8 0
--------------------------	---	----------------------	-----------------------



CATEGORY	A	B	C	D
C CIRCLING	660-1	580 (600-1)	NA	NA

MIRL Rwy 13-31 **0**

SC-3, 28 NOV 2024 to 26 DEC 2024

SC-3, 28 NOV 2024 to 26 DEC 2024