

|  |                        |                             |   |
|--|------------------------|-----------------------------|---|
| WAAS<br>CH <b>97634</b><br><b>W19A</b> | APP CRS<br><b>194°</b> | Rwy Idg<br>TDZE<br>Apt Elev | <b>5507</b><br><b>497</b><br><b>497</b> |
|--|------------------------|-----------------------------|---|

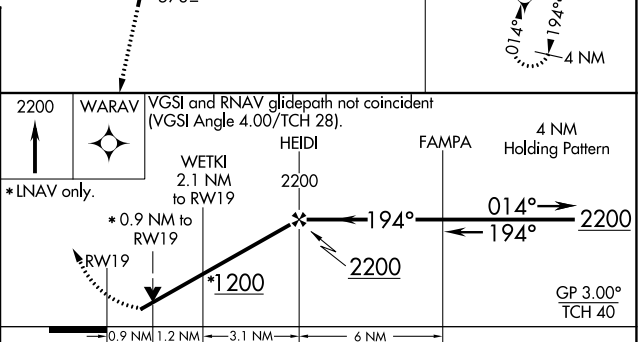
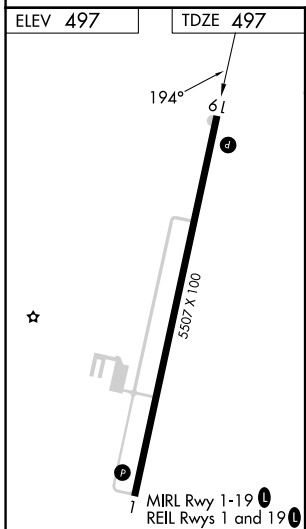
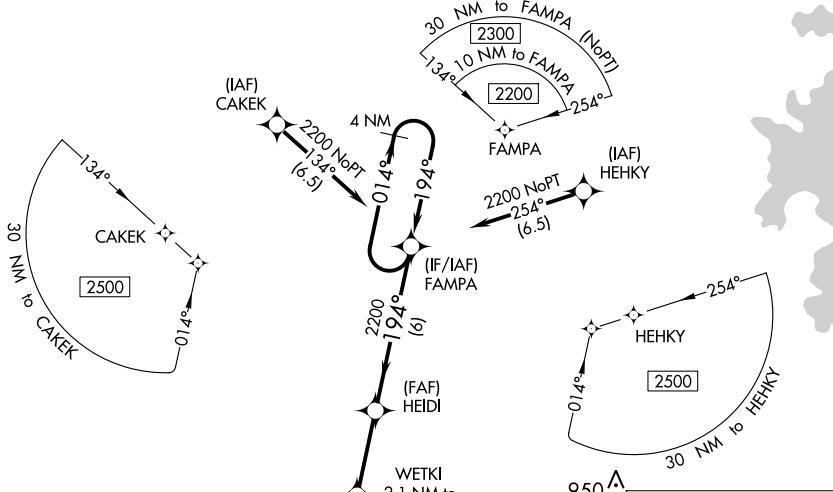
# RNAV (GPS) RWY 19

CARROLL COUNTY (HZD)

**⚠ NA** For uncompensated Baro-VNAV systems, LNAV/VNAV NA below -15°C (5°F) or above 54°C (130°F). DME/DME RNP-0.3 NA. When local altimeter setting not received, use Mc Kellar-Sipes Rgnl altimeter setting and increase all DA 94 feet and all MDA 100 feet; increase LPV all Cats and LNAV/VNAV all Cats visibility 3/8 mile, LNAV Cats C and D visibility 1/4 mile, and Circling Cats C and D visibility 1/2 mile. VDP and Baro-VNAV NA with Mc Kellar-Sipes Rgnl altimeter setting. Helicopter visibility reduction below 3/4 SM NA.

MISSED APPROACH:  
Climb to 2200 direct  
WARAV and hold.

|                          |  |                                 |
|--------------------------|--|---------------------------------|
| AWOS-3<br><b>133.275</b> | MEMPHIS CENTER<br><b>134.65 316.15</b> | UNICOM<br><b>122.8 (CTAF) 0</b> |
|--------------------------|--|---------------------------------|



| CATEGORY     | A      | B           | C                     | D                       |
|--------------|--------|-------------|-----------------------|-------------------------|
| LPV DA       | 798-1  |             | 301 (400-1)           |                         |
| LNAV/VNAV DA | 933-1½ |             | 436 (500-1½)          |                         |
| LNAV MDA     | 920-1  | 423 (500-1) | 920-1¼                | 423 (500-1¼)            |
| CIRCLING     | 980-1  | 483 (500-1) | 1220-2<br>723 (800-2) | 1220-2¼<br>723 (800-2¼) |

SE-1, 28 NOV 2024 to 26 DEC 2024

SE-1, 28 NOV 2024 to 26 DEC 2024