

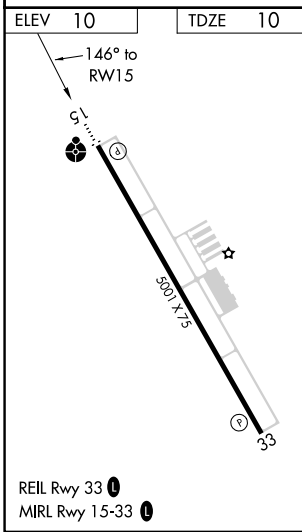
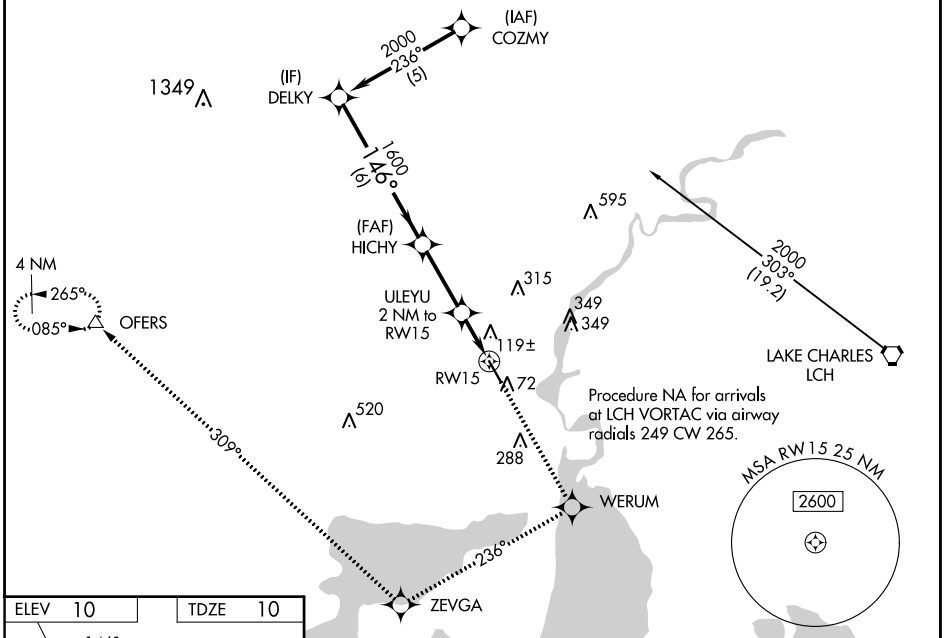
WAAS CH 86711 W15A	APP CRS 146°	Rwy Idg TDZE Apt Elev	5001 10 10
--	------------------------	-----------------------------	---------------------------------------

RNAV (GPS) RWY 15

SOUTHLAND FLD (UXL)

RNP APCH-GPS	<p>⚠ Inoperative table does not apply to LNAV/VNAV. Baro-VNAV NA when using Lake Charles Rgnl altimeter setting. For uncompensated Baro-VNAV systems, LNAV/VNAV NA below -15°C or above 48°C. Rwy 15 helicopter visibility reduction below 3/4 SM NA. When local altimeter setting not received, use Lake Charles Rgnl altimeter setting and increase LPV DA to 438 feet and all visibilities 1/4 SM; increase LNAV/VNAV DA to 438 feet; increase all MDAs 20 feet and Circling visibility Cat C/D 1/4 SM. VDP NA when using Lake Charles Rgnl altimeter setting.</p>	<p>ODALS</p>	<p>MISSED APPROACH: Climb to 2500 direct WERUM and via 236° track to ZEVGA and via 309° track to OFERS and hold.</p>
--------------	--	--------------	--

AWOS-3PT 118.175	LAKE CHARLES APP CON * 119.35 282.3	UNICOM 122.8 (CTAF) 0
----------------------------	---	---------------------------------



ELEV 10	TDZE 10						
Procedure	Turn	2500	WERUM	tr 236°	ZEVGA	tr 309°	OFERS
NA	DELKY						△
2000		HICHY		ULEYU 2 NM to RW15		*LNAV only	
GP 3.00°		146°		*1.1 NM to RW15			
TCH 40		1600		*680			
VGSi and RNAV glidepath not coincident (VGSi Angle 3.00/TCH 50).							
6 NM		2.8 NM		0.9		1.1	
CATEGORY	A	B	C	D			
LPV DA	309-1		299 (300-1)				
LNAV/VNAV DA	419-1½		409 (500-1½)				
LNAV MDA	380-¾		370 (400-¾)		380-1¼ 370 (400-1¼)		
CIRCLING	420-1 410 (500-1)	520-1 510 (600-1)	680-1¾ 670 (700-1¾)	680-2 670 (700-2)			

SC-4, 28 NOV 2024 to 26 DEC 2024

SC-4, 28 NOV 2024 to 26 DEC 2024