

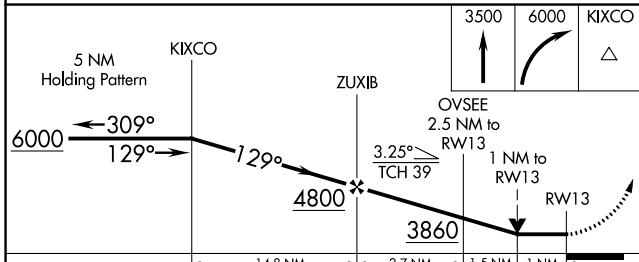
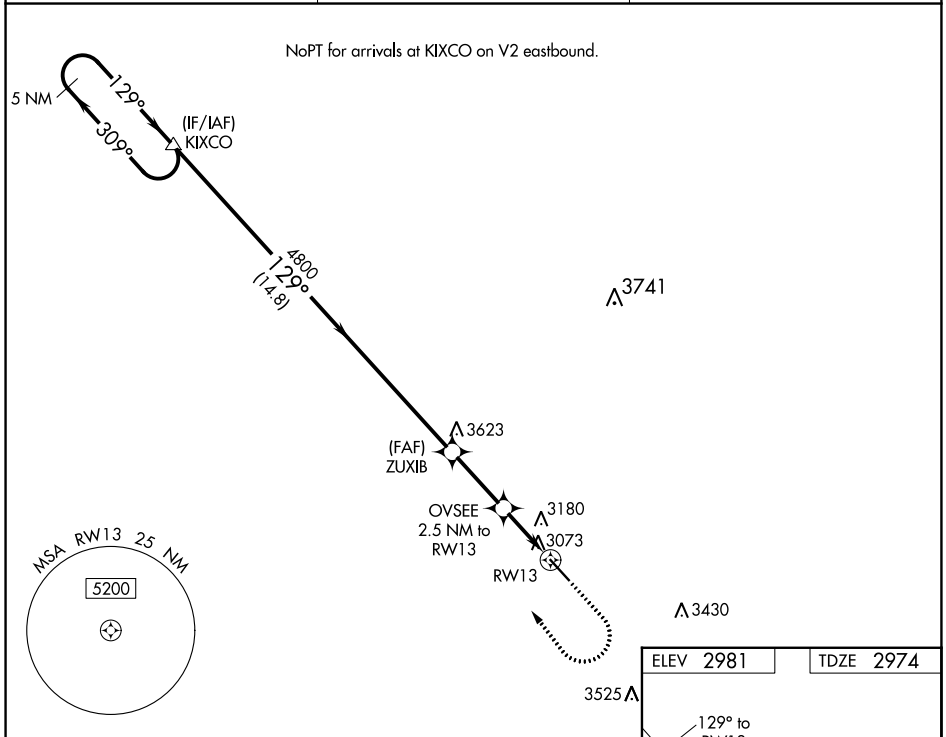
WAAS CH <b>86339</b> <b>W13A</b>	APP CRS <b>129°</b>	Rwy Idg TDZE Apt Elev	<b>5904</b> <b>2974</b> <b>2981</b>
--	------------------------	-----------------------------	---

# RNAV (GPS) RWY 13

BAKER MUNI (BHK)

<p><b>⚠</b> DME/DME RNP-0.3 NA. Helicopter visibility reduction below ¾ SM NA.</p>	<p>MISSED APPROACH: Climb to 3500 then climbing right turn to 6000 direct KIXCO and hold.</p>
--	---

ASOS <b>135.475</b>	SALT LAKE CENTER <b>126.85 305.2</b>	CTAF <b>122.9</b> <b>Ⓛ</b>
------------------------	---	-------------------------------



ELEV 2981	TDZE 2974
-----------	-----------

129° to RWY 13  
0.3% UP  
5904 X 75  
5

<p><b>Ⓛ</b> MRL Rwy 13-31 <b>Ⓛ</b> REIL Rwy 13 and 31 <b>Ⓛ</b></p>
--

CATEGORY	A	B	C	D
LP MDA	3340-1		366 (400-1)	
LNAV MDA	3480-1	506 (500-1)	3480-1 3/8	506 (500-1 1/8)
<b>Ⓛ</b> CIRCLING	3540-1	559 (600-1)	3620-1 3/4 639 (700-1 3/4)	3820-2 3/4 839 (900-2 3/4)

NW-1, 28 NOV 2024 to 26 DEC 2024

NW-1, 28 NOV 2024 to 26 DEC 2024