

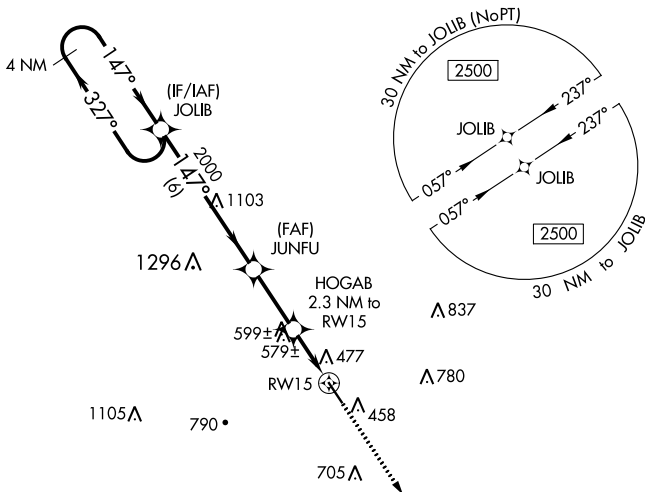
WAAS CH 49234 W15A	APP CRS 147°	Rwy Idg TDZE Apt Elev	5003 392 392
--	------------------------	-----------------------------	---

RNAV (GPS) RWY 15

BOONEVILLE/BALDWIN (8M1)

RNP APCH.	MISSED APPROACH: Climb to 2500 direct MANIL and hold.
<p>Baro-VNAV NA. Use Corinth altimeter setting, when not received use Tupelo altimeter setting and increase all DA 4 feet, and all MDA 20 feet. Rwy 15 helicopter visibility reduction below 3/4 SM NA.</p>	

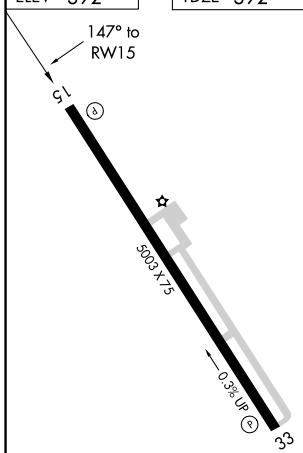
CRX AWOS-3PT 118.675	MEMPHIS CENTER 135.9 273.55	UNICOM 122.8 (CTAF) 0
--------------------------------	---------------------------------------	---------------------------------



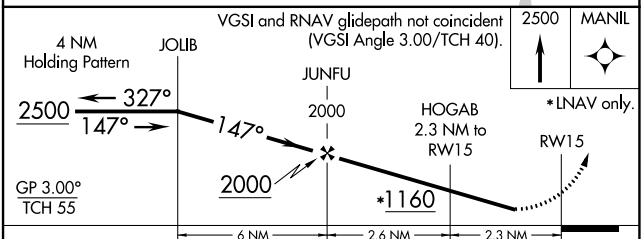
SC-4, 28 NOV 2024 to 26 DEC 2024

SC-4, 28 NOV 2024 to 26 DEC 2024

ELEV 392	TDZE 392
----------	----------



MIRL Rwy 15-33 0
REIL Rwy 15 and 33



CATEGORY	A	B	C	D
LPV DA		777-1¼	385 (400-1¼)	
LNAV/VNAV DA		842-1½	450 (500-1½)	
LNAV MDA		880-1 488 (500-1)	880-1¾ 488 (500-1¾)	