

VOR/DME OTB 109.8 Chan 35	APP CRS 015°	Rwy Idg TDZE Apt Elev	N/A N/A 392
---	------------------------	-----------------------------	--

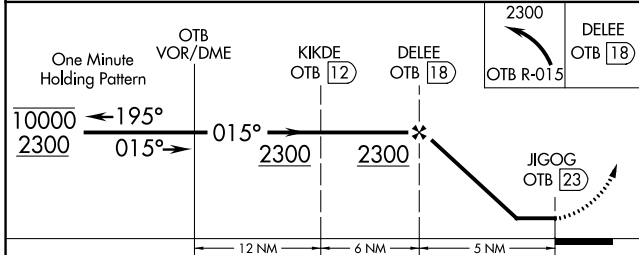
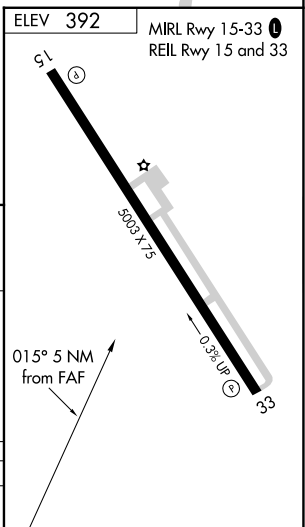
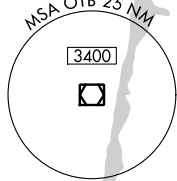
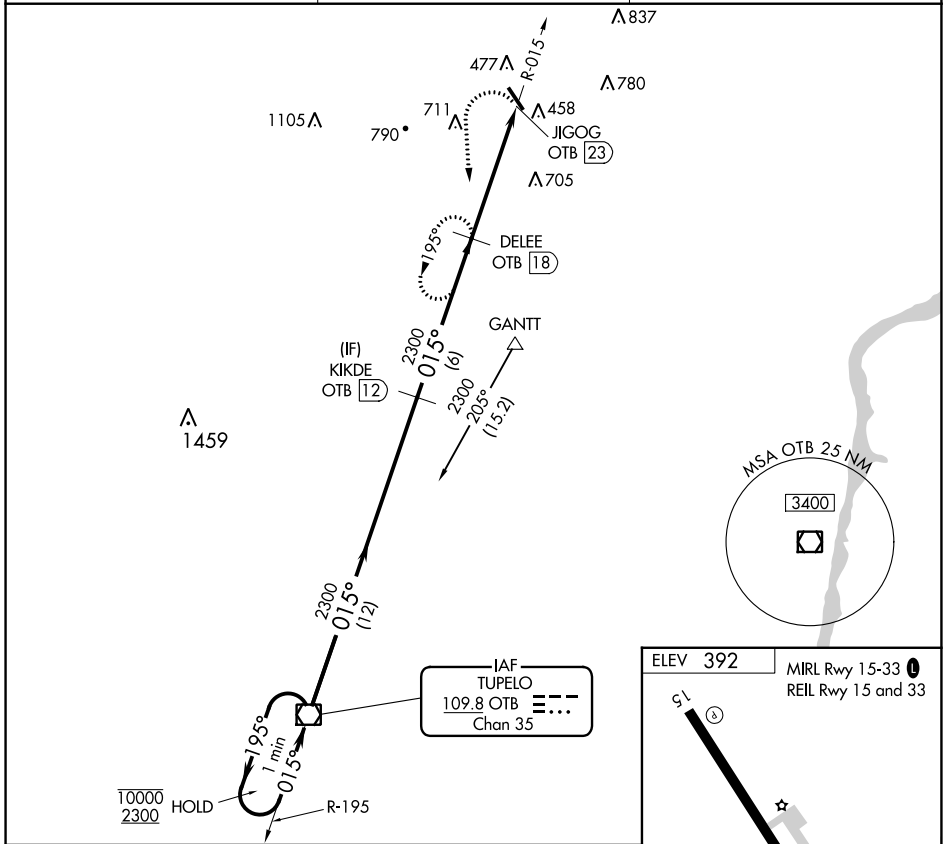
VOR-A
BOONEVILLE/BALDWIN (8M1)

DME required. RNAV 1-GPS or RADAR required for procedure entry.

▼ Use Corinth altimeter setting, when not received, use Tupelo altimeter setting and
▲ NA increase all MDA 20 feet.

MISSED APPROACH: Climbing left turn to 2300 on OTB VOR/DME R-015 to DELEE/OTB 18 DME and hold.

CRX AWOS-3PT 118.675	MEMPHIS CENTER 135.9 273.55	UNICOM 122.8 (CTAF) 0
--------------------------------	---------------------------------------	---------------------------------



CATEGORY	A	B	C	D
CIRCLING	1120-1 728 (800-1)	1120-1¼ 728 (800-1¼)	1180-2¼ 788 (800-2¼)	1340-3 948 (1000-3)

SC-4, 28 NOV 2024 to 26 DEC 2024

SC-4, 28 NOV 2024 to 26 DEC 2024