

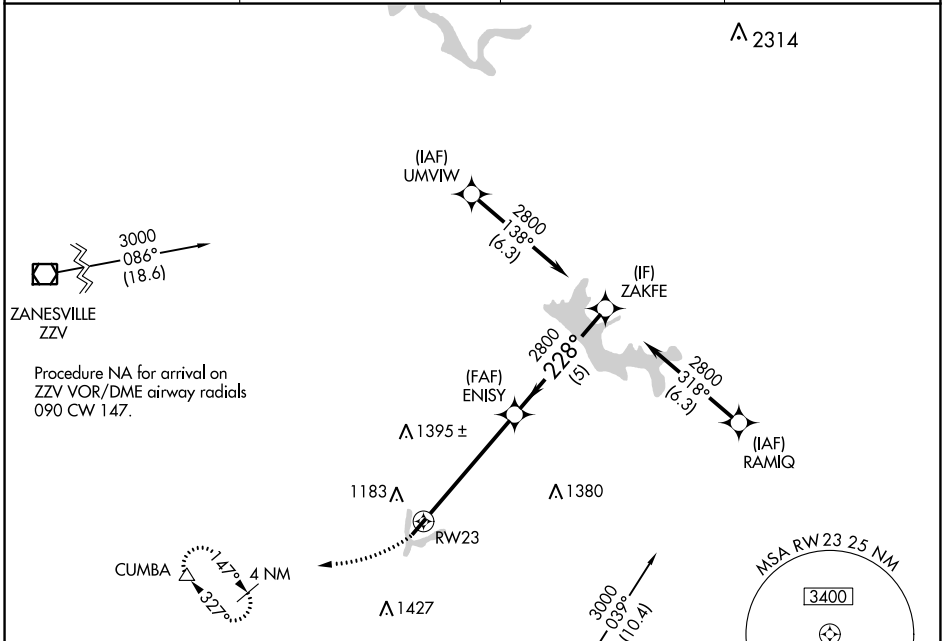
WAAS CH <b>48841</b> <b>W23A</b>	APP CRS <b>228°</b>	Rwy Idg TDZE Apt Elev	<b>3398</b> <b>878</b> <b>879</b>
--	------------------------	-----------------------------	---

# RNAV (GPS) RWY 23

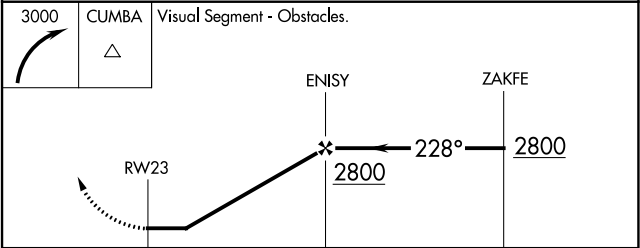
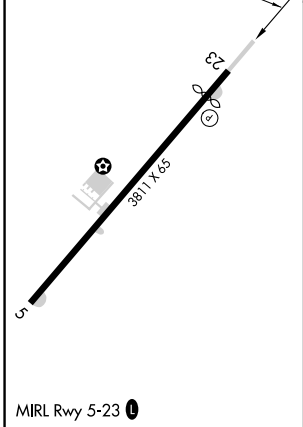
NOBLE COUNTY (I10)

**⚠** Rwy 23 helicopter visibility reduction below 1 SM NA.  
**⚠** DME/DME RNP-0.3 NA. Procedure NA at night. Use Zanesville altimeter setting; when not received, procedure NA.  
 MISSED APPROACH: Climbing right turn to 3000 direct to CUMBA and hold.

ZZV ASOS <b>114.95</b>	INDIANAPOLIS CENTER <b>124.45 323.275</b>	UNICOM <b>122.8 (CTAF)</b>	<b>122.7 0</b>
---------------------------	--	-------------------------------	----------------



ELEV 879	TDZE 878
----------	----------



CATEGORY	A	B	C	D
LP MDA	1580-1	702 (800-1)	1580-2 702 (800-2)	NA
LNAV MDA	1620-1 742 (800-1)	1620-1¼ 742 (800-1¼)	1620-2 742 (800-2)	NA
<b>C</b> CIRCLING	1620-1	741 (800-1)	1660-2¼ 781 (800-2¼)	NA

EC-2, 28 NOV 2024 to 26 DEC 2024

EC-2, 28 NOV 2024 to 26 DEC 2024