

# RNAV (GPS)-A

HEBER VALLEY (HCR)

APP CRS <b>179°</b>	Rwy Idg TDZE Apt Elev	<b>N/A</b> <b>N/A</b> <b>5637</b>
------------------------	-----------------------------	---

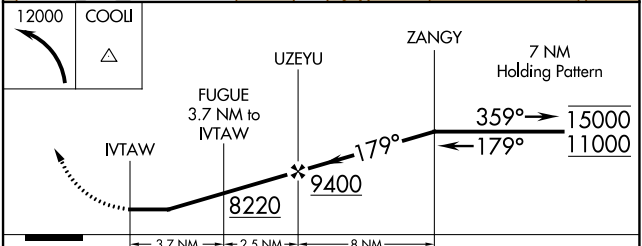
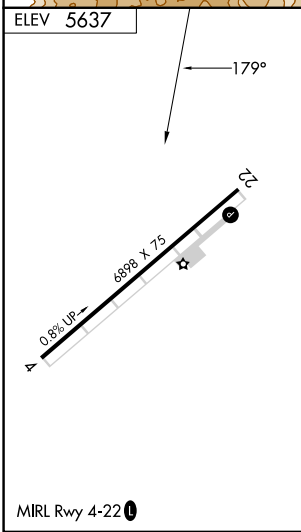
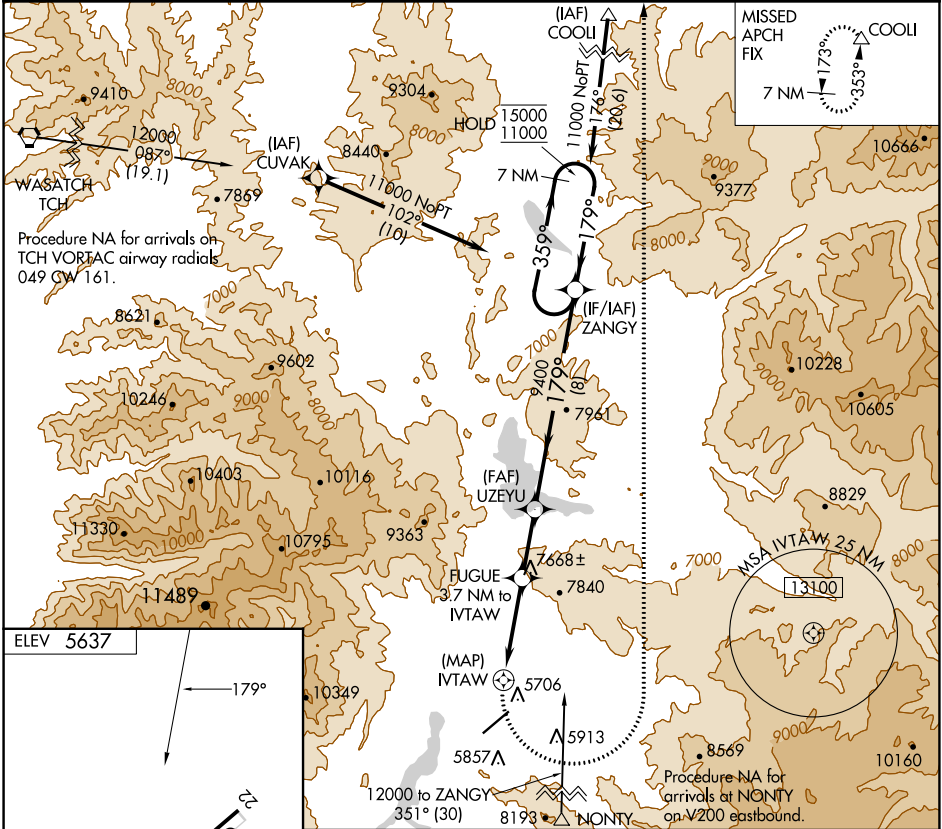
RNP APCH.

**⚠** Circling NA south of Rwy 4-22.  
**⚠** Circling Rwy 4 NA at night.

**🌡** -17°C

MISSED APPROACH: (Do not exceed 210K until turn completion)  
Climbing left turn to 12000 direct COOLI and hold.

AWOS-3PT <b>124.825</b>	SALT LAKE CITY CENTER <b>119.95 377.15</b>	UNICOM <b>122.8 (CTAF)</b>
----------------------------	---	-------------------------------



CATEGORY	A	B	C	D
<b>📍</b> CIRCLING	8020-1½	2383 (2400-1½)	8020-3 2383 (2400-3)	NA

SW-4, 28 NOV 2024 to 26 DEC 2024

SW-4, 28 NOV 2024 to 26 DEC 2024