

WAAS CH <b>72823</b> <b>W36A</b>	APP CRS <b>359°</b>	Rwy Idg TDZE Apt Elev	<b>4001</b> <b>1115</b> <b>1115</b>
--	------------------------	-----------------------------	---

# RNAV (GPS) RWY 36

OSCEOLA MUNI (I75)

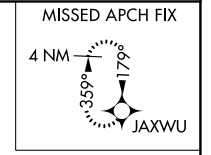
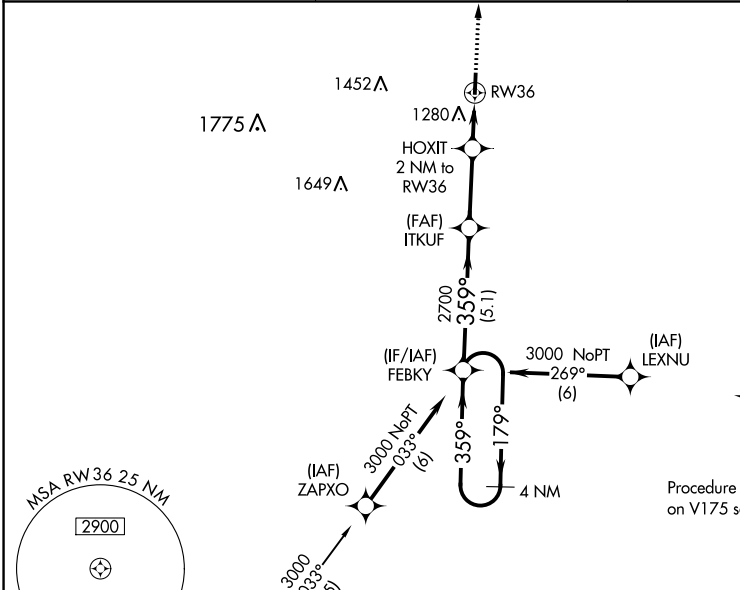
**⚠** When VGSI inop, Circling Rwy 18 NA at night. Baro-VNAV NA when using Chariton altimeter setting. For uncompensated Baro-VNAV systems, LNAV/VNAV NA below -17°C (2°F) or above 54°C (130°F). DME/DME RNP-0.3 NA. VDP NA with Chariton altimeter setting. When local altimeter setting not received, use Chariton altimeter setting and increase all DA 44 feet and all MDA 60 feet. Increase LPV all Cats visibility to 1 mile and LNAV/VNAV all Cats visibility to 1 ¼ mile. Visibility reduction by helicopters NA.

**MISSED APPROACH:**  
Climb to 3000 direct JAXWU and hold.

AWOS-3  
**120.975**

DES MOINES APP CON  
**123.9 360.7**

UNICOM  
**122.8 (CTAF)**



MSA RW36 25 NM  
2900

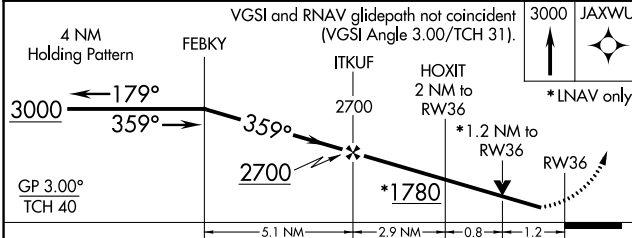
LAMO, LMN

Procedure NA for arrivals on LMN VOR/DME airway radials 009 CW 106.

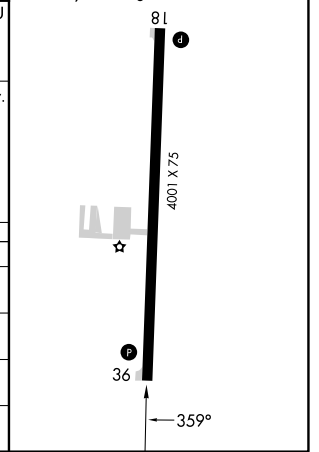
VGSI and RNAV glidepath not coincident (VGSI Angle 3.00/TCH 31).

3000 JAXWU

\*LNAV only.



ELEV 1115	TDZE 1115
REIL Rwy 18 and 36	
MIRL Rwy 18-36	



CATEGORY	A	B	C	D
LPV DA	1365-7/8	250 (300-7/8)		NA
LNAV/VNAV DA	1423-1	308 (400-1)		NA
LNAV MDA	1540-1	425 (500-1)		NA
CIRCLING	1580-1	465 (500-1)		NA

NC-3, 28 NOV 2024 to 26 DEC 2024

NC-3, 28 NOV 2024 to 26 DEC 2024