

APP CRS <b>101°</b>	Rwy Idg <b>3712</b>
	TDZE <b>679</b>
	Apt Elev <b>686</b>

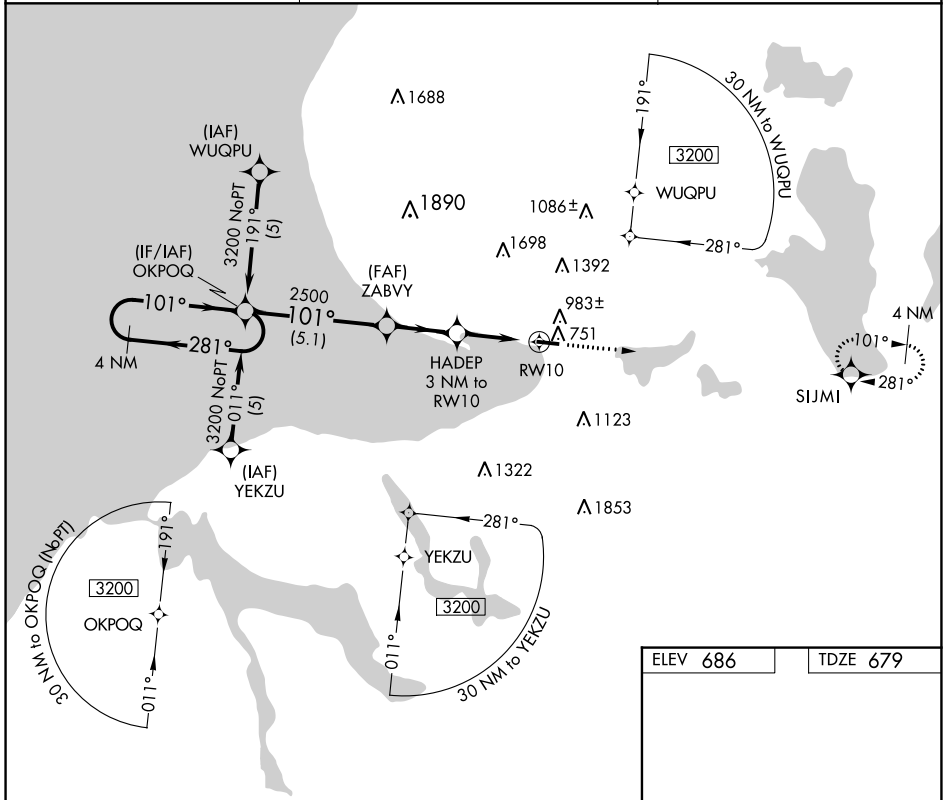
# RNAV (GPS) RWY 10

HARBOR SPRINGS (MGN)

**⚠** DME/DME RNP-0.3 NA. When local altimeter setting not received, use  
**⚠** Pellston altimeter setting and increase all MDAs 40 feet. Procedure NA  
 at night. Helicopter visibility reduction below 1 SM NA.

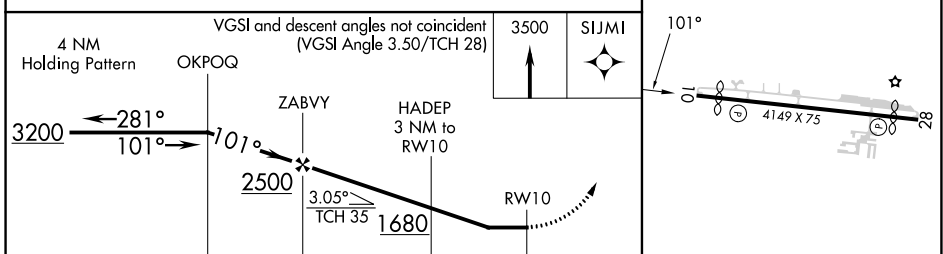
MISSED APPROACH: Climb to 3500 direct SIJMI and hold.

AWOS-3P <b>119.925</b>	MINNEAPOLIS CENTER <b>134.6 354.05</b>	UNICOM <b>122.8</b> (CTAF) <b>0</b>
---------------------------	---	--



EC-1, 28 NOV 2024 to 26 DEC 2024

EC-1, 28 NOV 2024 to 26 DEC 2024



CATEGORY	A	B	C	D
LNNAV MDA	1240-1	561 (600-1)		NA
CIRCLING	1380-1 694 (700-1)	1500-1 ¼ 814 (900-1 ¼)		NA

ELEV 686 | TDZE 679

MIRL Rwy 10-28 **0**