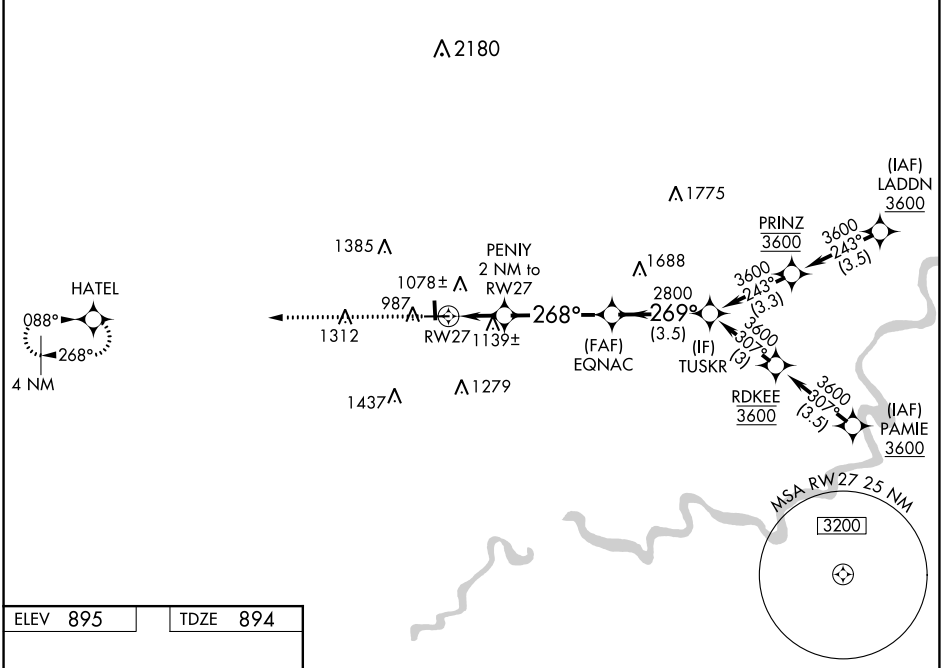


WAAS CH <b>97604</b> <b>W27A</b>	APP CRS <b>268°</b>	Rwy Idg TDZE Apt Elev	<b>5074</b> <b>894</b> <b>895</b>
--	------------------------	-----------------------------	---

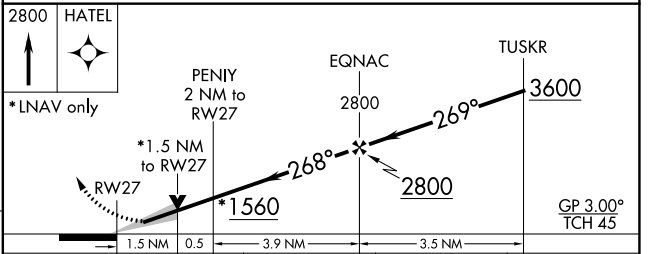
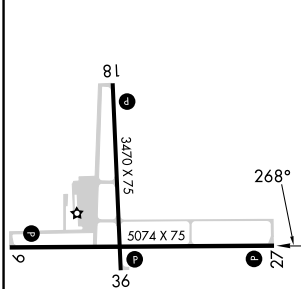
# RNAV (GPS) RWY 27

MENOMONIE MUNI/SCORE FLD (LUM)

RNP APCH.		<p>⚠ Circling Rwy 18, 36 NA at night. For uncompensated Baro-VNAV systems, LNAV/VNAV NA below -16°C or above 54°C.</p>		<p>MISSED APPROACH: Climb to 2800 direct HATEL and hold.</p>	
<p>AWOS-3 <b>118.025</b></p>		<p>MINNEAPOLIS CENTER <b>125.3 335.6</b></p>		<p>UNICOM <b>122.7 (CTAF) 0</b></p>	



ELEV 895	TDZE 894
----------	----------



CATEGORY	A	B	C	D
LPV DA	1144-3/4	250 (300-3/4)		NA
LNAV/ VNAV DA	1470-15/8	576 (600-15/8)		NA
LNAV MDA	1400-1	506 (600-1)	1400-13/8 506 (600-13/8)	NA
<b>C</b> CIRCLING	1420-1 525 (600-1)	1800-11/4 905 (1000-11/4)	1820-23/4 925 (1000-23/4)	NA

REIL Rwy 9 and 27  
MIRL Rwy 9-27 and 18-36

MENOMONIE, WISCONSIN  
Amdt 1 20JUN19

MENOMONIE MUNI/SCORE FLD (LUM)  
RNAV (GPS) RWY 27

44°54'N-91°52'W

EC-3, 28 NOV 2024 to 26 DEC 2024