

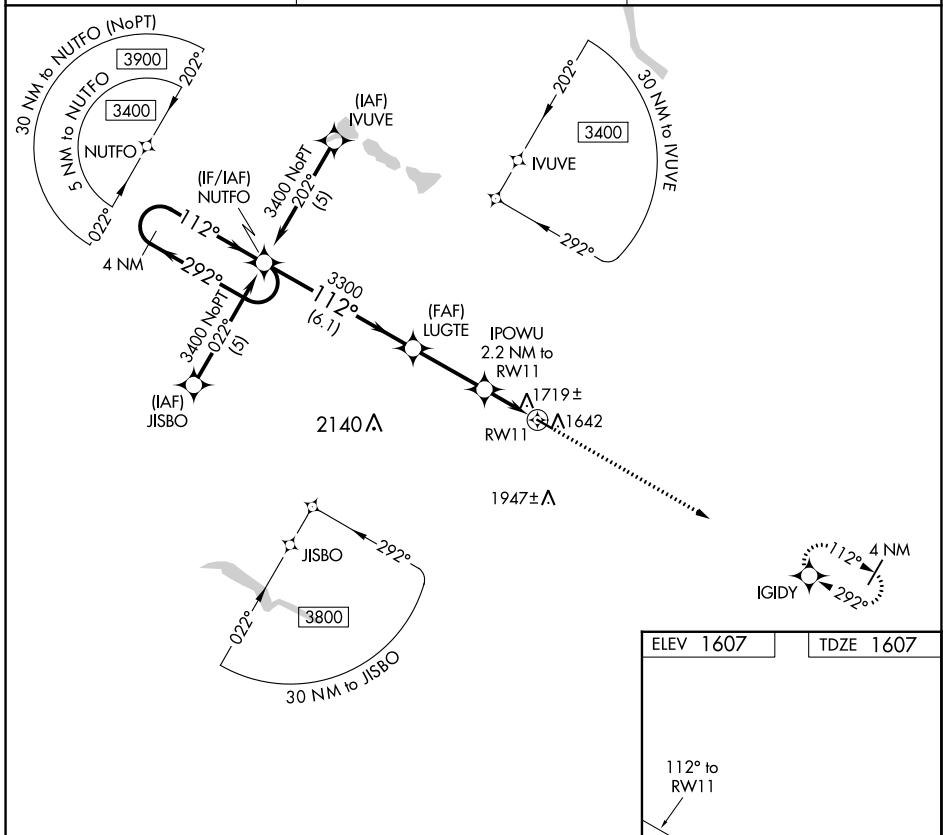
APP CRS	Rwy Idg	<b>3600</b>
<b>112°</b>	TDZE	<b>1607</b>
	Apt Elev	<b>1607</b>

# RNAV (GPS) RWY 11

HARVEY MUNI (5H4)

RNP APCH.	<p>Procedure NA at night. Rwy 11 helicopter visibility reduction below 1 SM NA. When local altimeter setting not received; use Devil's Lake altimeter setting and increase all MDA 140 feet and LNAV Cat C visibility 1/2 SM.</p>	<p>MISSED APPROACH: Climb to 3300 direct IGIDY and hold.</p>
-----------	---	--

AWOS-3 <b>118.825</b>	MINNEAPOLIS CENTER <b>135.25 256.7</b>	UNICOM <b>122.8 (CTAF) 1</b>
--------------------------	---	---------------------------------



NC-1, 28 NOV 2024 to 26 DEC 2024

NC-1, 28 NOV 2024 to 26 DEC 2024

4 NM Holding Pattern NUTFO		VGSI and descent angles not coincident (VGSI Angle 3.00/TCH 27).		3300	IGIDY
3400	← 292°	→ 112°	112°	3300	IGIDY
6.1 NM		2.9 NM	2.2 NM	RW11	
A		B	C	D	
CATEGORY	A			D	
LNAV MDA	1980-1 373 (400-1)			NA	

