

WAAS CH <b>97542</b> <b>W12A</b>	APP CRS <b>122°</b>	Rwy Idg TDZE Apt Elev	<b>5000</b> <b>3319</b> <b>3333</b>
--	------------------------	-----------------------------	---

# RNAV (GPS) RWY 12

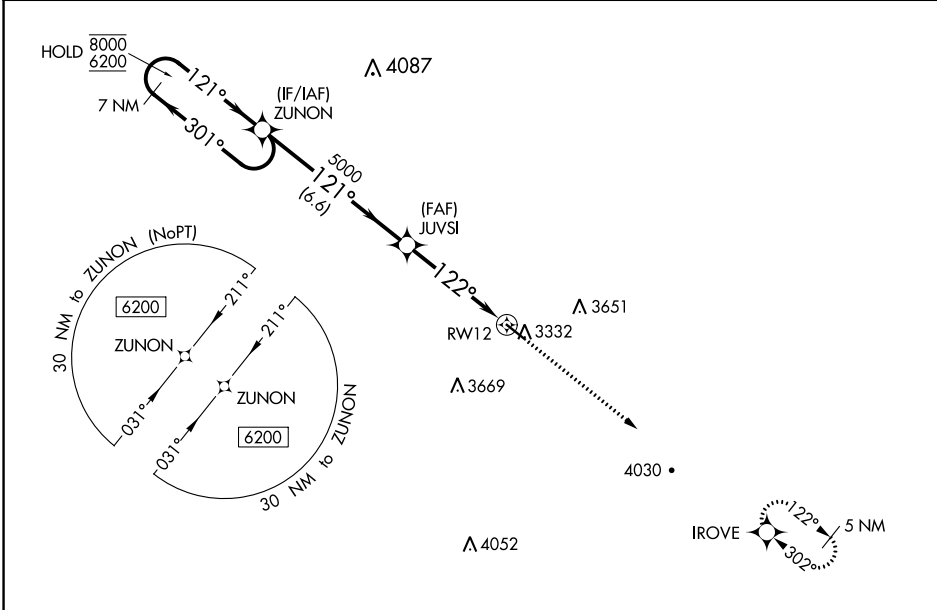
PINE RIDGE (IEN)

RNP APCH.

**V**  
**A** For uncompensated Baro-VNAV systems, LNAV/VNAV NA below -28°C or above 54°C.

MISSED APPROACH: Climb to 5700 direct IROVE and hold.

ASOS <b>126.775</b>	DENVER CENTER <b>127.95 338.2</b>	CTAF <b>122.9</b> <b>0</b>
------------------------	--------------------------------------	-------------------------------



NC-1, 28 NOV 2024 to 26 DEC 2024

NC-1, 28 NOV 2024 to 26 DEC 2024

		ELEV 3333	TDZE 3319	
7 NM Holding Pattern ZUNON 8000 ← 301° 6200 → 121° GP 3.41° TCH 45		5700 IROVE *LNAV only *1.4 NM to RWY 12 RWY 12 122° to RWY 12 0.7% UP 5000 X 75	30 4030 4052	
CATEGORY	A	B	C	D
LPV DA	3589-1 270 (300-1)			NA
LNAV/VNAV DA	3772-1 <sup>3</sup> / <sub>8</sub> 453 (500-1 <sup>3</sup> / <sub>8</sub> )			NA
LNAV MDA	3840-1	521 (600-1)	3840-1 <sup>1</sup> / <sub>2</sub> 521 (600-1 <sup>1</sup> / <sub>2</sub> )	NA
CIRCLING	3900-1 567 (600-1)	4080-1 747 (800-1)	4200-2 <sup>1</sup> / <sub>2</sub> 867 (900-2 <sup>1</sup> / <sub>2</sub> )	NA
		MIRL Rwy 12-30 <b>0</b>		