

APP CRS 130°	Rwy Idg 3900
	TDZE 408
	Apt Elev 412

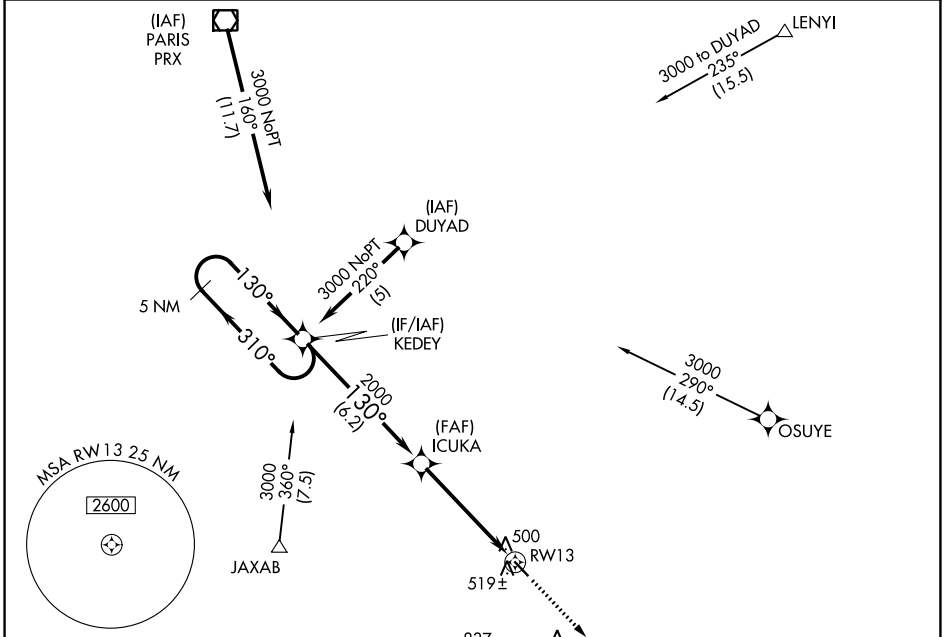
RNAV (GPS) RWY 13

FRANKLIN COUNTY (F53)

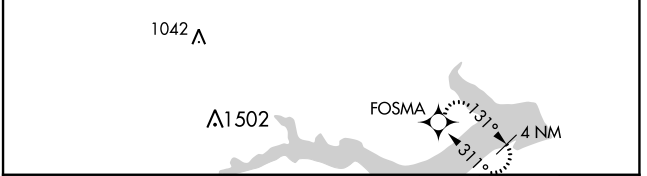
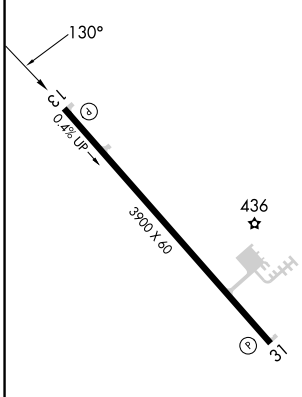
NA DME/DME RNP-0.3 NA. Use Mount Pleasant Rgnl altimeter setting; if not received, procedure NA. Procedure NA at night. Helicopter visibility reduction below 1 SM NA.

MISSED APPROACH: Climb to 3000 direct FOSMA and hold.

OSA AWOS-3 119.775	FORT WORTH CENTER 132.025 360.75	UNICOM 123.0 (CTAF)
------------------------------	--	-------------------------------



ELEV	412	TDZE	408
------	------------	------	------------



5 NM Holding Pattern	VGSi and descent angles not coincident (VGSi Angle 3.00/TCH 37).			3000	FOSMA
3000	← 310°	→ 130°	130°	ICUKA	RWY 13
			2000		
			3.04°		
			TCH 40		
			6.2 NM	4.9 NM	

CATEGORY	A	B	C	D
LNAV MDA	820-1	412 (500-1)		NA
CIRCLING	940-1 528 (600-1)	980-1 568 (600-1)		NA

SC-2, 28 NOV 2024 to 26 DEC 2024

SC-2, 28 NOV 2024 to 26 DEC 2024